

## Recombinant Human CD40LG protein

**Cat. No.** CD40LG-26080TH    **Lot. No.** (See product label)

### SPECIFICATION

<b>Product Overview</b>	Recombinant Human CD40LG protein was expressed in Escherichia coli.
<b>Species</b>	Human
<b>Source</b>	E.coli
<b>ProteinLength</b>	149
<b>Description</b>	<p>CD40 ligand is a 261 amino acid type II transmembrane glycoprotein belonging to the TNF family and can be cleaved into two chains: the CD40 ligand membrane form and CD40 ligand soluble form. It is primarily expressed on activated CD4+ T lymphocytes, and also found in other types of cells, like NK cells, mast cells, basophils and eosinophils. In total CD40 ligand has three binding partners: CD40, <math>\alpha 5\beta 1</math> integrin and <math>\alpha IIb\beta 3</math>. It mediates a range of activities on B cells including induction of activation-associated surface antigen, entry into cell cycle, isotype switching and Ig secretion and memory generation. CD40-CD40L interaction also plays important roles in monocyte activation and dendritic cell maturation.</p>
<b>Form</b>	Lyophilized from a 0.2 $\mu$ m filtered concentrated solution in PBS, pH 7.0.
<b>Bio-activity</b>	Fully biologically active when compared to standard. The ED50 as determined by the dose-dependent stimulation of IL-8 production by human PBMC is less than 5-10 ng/ml.
<b>Molecular Mass</b>	Approximately 16.3 kDa, a single non-glycosylated polypeptide chain containing 149

 Tel: 1-631-559-9269    1-516-512-3133

 Email: [info@creative-biomart.com](mailto:info@creative-biomart.com)     Fax: 1-631-938-8127

 45-1 Ramsey Road, Shirley, NY 11967, USA

	amino acids.
<b>AA Sequence</b>	MQKGDQNPQIAAHVISEASSKTTSVLQWAEKGYTMSNNLVTLENGKQLTVKRQGL YYIYAQVTFCSNREASSQAPFIASLWLKSPGRFERILLRAANTHSSAKPCGQQSIHLG GVFELQPGASVFNVTDP SQVSHGTGFTSFGLLKL
<b>Endotoxin</b>	Less than 1 EU/μg of rHusCD40L as determined by LAL method.
<b>Purity</b>	>95% by SDS-PAGE and HPLC analysis.
<b>Storage</b>	Use a manual defrost freezer and avoid repeated freeze-thaw cycles. 12 months from date of receipt, -20 to -70 centigrade as supplied. 1 month, 2 to 8 centigrade under sterile conditions after reconstitution. 3 months, -20 to -70 centigrade under sterile conditions after reconstitution.
<b>Reconstitution</b>	We recommend that this vial be briefly centrifuged prior to opening to bring the contents to the bottom. Reconstitute in sterile distilled water or aqueous buffer containing 0.1 % BSA to a concentration of 0.1-0.3 mg/mL. Stock solutions should be apportioned into working aliquots and stored at ≤-20 centigrade. Further dilutions should be made in appropriate buffered solutions.

## GENE INFORMATION

<b>Gene Name</b>	CD40LG
<b>Official Symbol</b>	CD40LG
<b>Synonyms</b>	CD40LG; CD40 ligand; HIGM1, IMD3, TNFSF5, tumor necrosis factor (ligand) superfamily, member 5 (hyper IgM syndrome); CD40 antigen ligand; CD40L; CD154; gp39; hCD40L; hyper IgM syndrome; T B cell activating molecule; TNF related activation protein; TRAP; tumor necrosis factor (ligand) superfamily member 5; CD40-

 Tel: 1-631-559-9269 1-516-512-3133

 Email: [info@creative-biomart.com](mailto:info@creative-biomart.com)  Fax: 1-631-938-8127

 45-1 Ramsey Road, Shirley, NY 11967, USA

L; T-cell antigen Gp39; T-B cell-activating molecule; TNF-related activation protein; IGM; IMD3; HIGM1; T-BAM; TNFSF5;

**Gene ID** 959

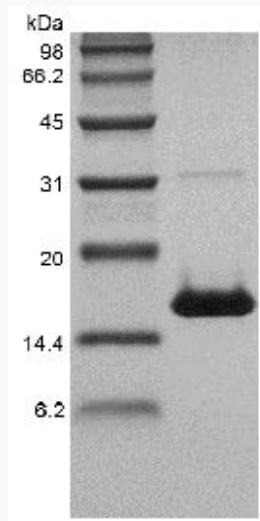
**mRNA Refseq** NM\_000074

**Protein Refseq** NP\_000065

**MIM** 300386

**UniProt ID** P29965

**SDS-PAGE of  
CD40LG-26080TH**



 Tel: 1-631-559-9269 1-516-512-3133

 Email: [info@creative-biomart.com](mailto:info@creative-biomart.com)  Fax: 1-631-938-8127

 45-1 Ramsey Road, Shirley, NY 11967, USA