

Active Recombinant Human CD40LG protein, Fc-tagged

Cat. No. CD40LG-279H Lot. No. (See product label)

SPECIFICATION

Product Overview	Active Recombinant Human CD40LG protein(NP_000065.1) (Met 113-Leu 261) was expressed in HEK293, fused with the Fc region of human IgG1 at the N-terminus.
Species	Human
Source	HEK293
ProteinLength	113-261 aa
Form	Lyophilized from sterile PBS, pH 7.4.
Bio-activity	Measured by its binding ability in a functional ELISA. Immobilized human CD40 at 2 µg/ml (100 µl/well) can bind human CD40L Fc Chimera with a linear ranger of 1.28-32 ng/ml.
Molecular Mass	The recombinant human CD40L/Fc is a disulfide-linked homodimeric protein. The reduced monomer consists of 386 amino acids and has a predicted molecular mass of 42.8 kDa. The apparent molecular mass of rh CD40L/Fc monomer is approximately 45 kDa in SDS-PAGE under reducing conditions.
Endotoxin	< 1 EU/g as determined by LAL test.
Purity	> 90 % as determined by SDS-PAGE
Storage	Store it under sterile conditions at -20°C to -80°C upon receiving. Recommend to

 Tel: 1-631-559-9269 1-516-512-3133

 Email: info@creative-biomart.com  Fax: 1-631-938-8127

 45-1 Ramsey Road, Shirley, NY 11967, USA

aliquot the protein into smaller quantities for optimal storage. Avoid repeated freeze-thaw cycles.

Reconstitution

It is recommended that sterile water be added to the vial to prepare a stock solution of 0.2 ug/ul. Centrifuge the vial at 4°C before opening to recover the entire contents.

GENE INFORMATION

Gene Name [CD40LG CD40 ligand \[Homo sapiens \]](#)

Official Symbol [CD40LG](#)

Synonyms

CD40LG; CD40 ligand; HIGM1, IMD3, TNFSF5, tumor necrosis factor (ligand) superfamily, member 5 (hyper IgM syndrome); CD40 antigen ligand; CD40L; CD154; gp39; hCD40L; hyper IgM syndrome; T B cell activating molecule; TNF related activation protein; TRAP; tumor necrosis factor (ligand) superfamily member 5; CD40-L; T-cell antigen Gp39; T-B cell-activating molecule; TNF-related activation protein; IGM; IMD3; HIGM1; T-BAM; TNFSF5;

Gene ID [959](#)

mRNA Refseq [NM_000074](#)

Protein Refseq [NP_000065](#)

MIM [300386](#)

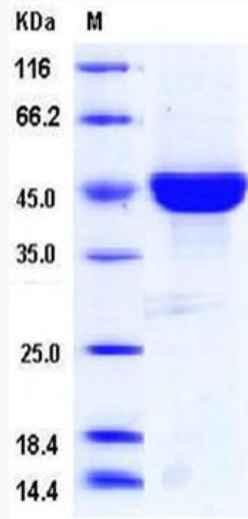
UniProt ID [P29965](#)

 Tel: 1-631-559-9269 1-516-512-3133

 Email: info@creative-biomart.com  Fax: 1-631-938-8127

 45-1 Ramsey Road, Shirley, NY 11967, USA

SDS-PAGE



 Tel: 1-631-559-9269 1-516-512-3133

 Email: info@creative-biomart.com  Fax: 1-631-938-8127

 45-1 Ramsey Road, Shirley, NY 11967, USA