

Recombinant Mouse CD40LG protein, His-tagged

Cat. No. CD40LG-325M Lot. No. (See product label)

SPECIFICATION

Product Overview	Recombinant Mouse CD40LG protein (Gly115-Leu260), fused to His tag at N-terminus, was expressed in human 293 cells (HEK293).
Species	Mouse
Source	HEK293
ProteinLength	146
Description	<p>CD40 ligand is also known as CD40L, CD154, TNFSF5 and T-cell antigen Gp39, is a single-pass type I I membrane protein which belongs to the TNF superfamily of molecules. CD40 ligand is expressed predominantly on activated CD4+ T lymphocytes, and also found in other types of cells, including platelets, mast cells, macrophages, basophils, NK cells, B lymphocytes, as well as non-haematopoietic cells (smooth muscle cells, endothelial cells, and epithelial cells). Although all monomeric, dimeric and trimeric forms of soluble CD40 ligand can bind to CD40, the trimeric form of soluble CD40 ligand has the most potent biological activity through oligomerization of cell surface CD40, a common feature of TNF receptor family members.</p> <p>CD40 ligand binds to CD40 on antigen-presenting cells (APC), which leads to many effects depending on the target cell type. In general, CD40 ligand plays the role of a costimulatory molecule and induces activation in APC in association with T cell receptor stimulation by MHC molecules on the APC. In total CD40 ligand has three binding partners: CD40, $\alpha 5\beta 1$ integrin and $\alpha 11\beta 3$. CD40 ligand regulates B cell</p>

 Tel: 1-631-559-9269 1-516-512-3133

 Email: info@creative-biomart.com  Fax: 1-631-938-8127

 45-1 Ramsey Road, Shirley, NY 11967, USA

function by engaging CD40 on the B cell surface. A defect in this gene results in an inability to undergo immunoglobulin class switch and is associated with hyper IgM syndrome.

Form Lyophilized from 0.22 um filtered solution in PBS, pH7.4, 10% trehalose.

Molecular Mass The protein has a calculated MW of 16.8 kDa. The protein migrates as 21-25 kDa under reducing (R) condition (SDS-PAGE).

Endotoxin Less than 1.0 EU per ug by the LAL method.

Purity >95% as determined by SDS-PAGE.

Storage For long term storage, the product should be stored at lyophilized state at -20 centigrade or lower.
Please avoid repeated freeze-thaw cycles.
This product is stable after storage at:
-20 centigrade to -70 centigrade for 12 months in lyophilized state;
-70 centigrade for 3 months under sterile conditions after reconstitution.

Reconstitution It is recommended that sterile water be added to the vial to prepare a stock solution of 0.2 ug/ul. Centrifuge the vial at 4°C before opening to recover the entire contents.

GENE INFORMATION

Gene Name CD40LG

Official Symbol CD40LG

Synonyms CD40LG; CD40 ligand; T-cell antigen Gp39; TNF-related activation protein; tumor necrosis factor ligand superfamily member 5; IGM; IMD3; Ly62; TRAP; gp39; CD154;

 Tel: 1-631-559-9269 1-516-512-3133

 Email: info@creative-biomart.com  Fax: 1-631-938-8127

 45-1 Ramsey Road, Shirley, NY 11967, USA

Cd40l; HIGM1; Ly-62; T-BAM; CD40-L; Tnfsf5

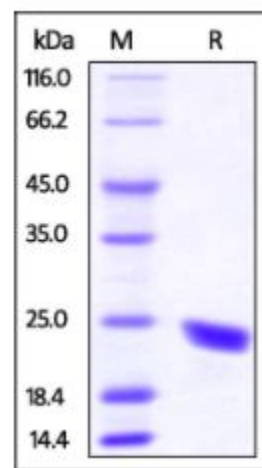
Gene ID 21947

mRNA Refseq NM_011616

Protein Refseq NP_035746

UniProt ID Q0VEI3

**SDS-PAGE of
CD40LG-325M**



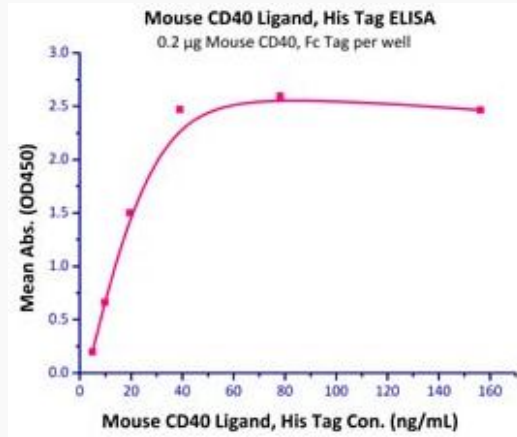
Mouse CD40 Ligand, His Tag on SDS-PAGE under reducing (R) condition. The gel was stained overnight with Coomassie Blue. The purity of the protein is greater than 95%.

 Tel: 1-631-559-9269 1-516-512-3133

 Email: info@creative-biomart.com  Fax: 1-631-938-8127

 45-1 Ramsey Road, Shirley, NY 11967, USA

**Bioactivity-ELISA of
CD40LG-325M**



Immobilized Mouse CD40, Fc Tag at 2 µg/mL (100 µl/well) can bind Mouse CD40 Ligand, His Tag with a linear range of 5-20 ng/mL (QC tested).

 Tel: 1-631-559-9269 1-516-512-3133

 Email: info@creative-biomart.com  Fax: 1-631-938-8127

 45-1 Ramsey Road, Shirley, NY 11967, USA