

Recombinant Rabbit CD40LG Protein (113-261 aa), His-tagged

Cat. No. CD40LG-392R Lot. No. (See product label)

SPECIFICATION

Product Overview	Recombinant Rabbit CD40LG Protein (113-261 aa) is produced by E. coli expression system. This protein is fused with a 6xHis tag at the N-terminal. Protein Description: Partial.
Species	Rabbit
Source	E.coli
ProteinLength	113-261 aa
Description	Mediates B-cell proliferation in the absence of co-stimulus as well as IgE production in the presence of IL-4. Involved in immunoglobulin class switching.
Form	Tris-based buffer, 50% glycerol
Molecular Mass	20.2 kDa
AA Sequence	MQKGDQDPQIAAHLISEASSKSSSVLQWAKKGYTMSNTLVTLENGKQLKVKRQGF YYIYAQVTFCSNQEPSSQAPFIASLCLKSSGGSERILLRAANARSSSKTCEQQSIHLG GVFELQADASVFNVTASQVNHGTGFTSFGLLKL
Purity	> 90% as determined by SDS-PAGE.
Notes	Repeated freezing and thawing is not recommended. Store working aliquots at 4 centigrade for up to one week.

 Tel: 1-631-559-9269 1-516-512-3133

 Email: info@creative-biomart.com  Fax: 1-631-938-8127

 45-1 Ramsey Road, Shirley, NY 11967, USA

Storage The shelf life is related to many factors, storage state, buffer ingredients, storage temperature and the stability of the protein itself. Generally, the shelf life of liquid form is 6 months at -20 centigrade/-80 centigrade. The shelf life of lyophilized form is 12 months at -20 centigrade/-80 centigrade.

Concentration A hardcopy of COA with concentration instruction is sent along with the products.

GENE INFORMATION

Gene Name CD40LG CD40 ligand [*Oryctolagus cuniculus* (rabbit)]

Official Symbol CD40LG

Synonyms TNLG8B;

Gene ID 100358388

mRNA Refseq NM_001256781

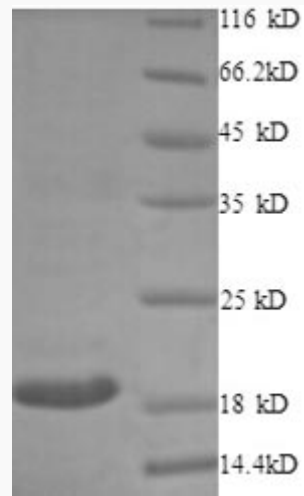
Protein Refseq NP_001243710.1

UniProt ID G1SKP7

 Tel: 1-631-559-9269 1-516-512-3133

 Email: info@creative-biomart.com  Fax: 1-631-938-8127

 45-1 Ramsey Road, Shirley, NY 11967, USA



(Tris-Glycine gel) Discontinuous SDS-PAGE (reduced) with 5% enrichment gel and 15% separation gel.

 Tel: 1-631-559-9269 1-516-512-3133

 Email: info@creative-biomart.com  Fax: 1-631-938-8127

 45-1 Ramsey Road, Shirley, NY 11967, USA