

Active Recombinant Human CD40LG protein, His-tagged

Cat. No. CD40LG-458H Lot. No. (See product label)

SPECIFICATION

Product Overview	Recombinant Human CD40LG protein(P29965)(Gly116-Leu261), fused with His tag, was expressed in HEK293.
Species	Human
Source	HEK293
ProteinLength	Gly116-Leu261
Form	Lyophilized from 0.22 µm filtered solution in PBS, pH7.4.
Bio-activity	When Recombinant Human CD40L/Trimer His Protein is immobilized at 1g/mL (100 µ/well), the concentration of CD40 (human):Fc (human) (rec.) that produces 50% of the optimal binding response is approximately 1.3ug/ml.
Molecular Mass	The protein has a calculated MW of 50kDa.The reducing (R) heterodimer protein migrates as 50-70 kDa due to glycosylation
Endotoxin	<1EU/mg
Purity	SDS-PAGE>90%SEC>90%
Storage	Store at -20°C.
Reconstitution	sterile H63O

 Tel: 1-631-559-9269 1-516-512-3133

 Email: info@creative-biomart.com  Fax: 1-631-938-8127

 45-1 Ramsey Road, Shirley, NY 11967, USA

GENE INFORMATION

Gene Name [CD40LG CD40 ligand \[Homo sapiens \]](#)

Official Symbol [CD40LG](#)

Synonyms [CD40LG](#); [CD40 ligand](#); [HIGM1](#), [IMD3](#), [TNFSF5](#), tumor necrosis factor (ligand) superfamily, member 5 (hyper IgM syndrome); [CD40 antigen ligand](#); [CD40L](#); [CD154](#); [gp39](#); [hCD40L](#); [hyper IgM syndrome](#); [T B cell activating molecule](#); [TNF related activation protein](#); [TRAP](#); [tumor necrosis factor \(ligand\) superfamily member 5](#); [CD40-L](#); [T-cell antigen Gp39](#); [T-B cell-activating molecule](#); [TNF-related activation protein](#); [IGM](#); [IMD3](#); [HIGM1](#); [T-BAM](#); [TNFSF5](#);

Gene ID [959](#)

mRNA Refseq [NM_000074](#)

Protein Refseq [NP_000065](#)

MIM [300386](#)

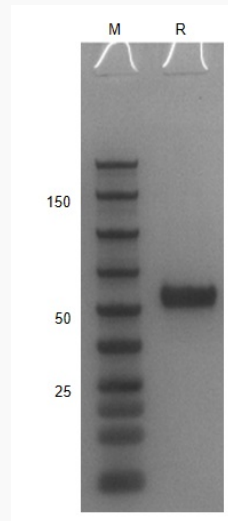
UniProt ID [P29965](#)

 Tel: 1-631-559-9269 1-516-512-3133

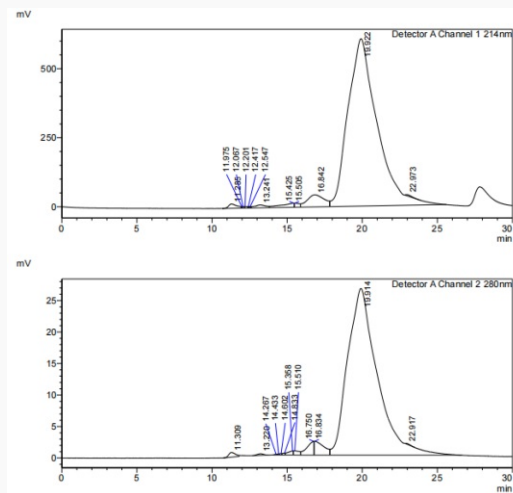
 Email: info@creative-biomart.com  Fax: 1-631-938-8127

 45-1 Ramsey Road, Shirley, NY 11967, USA

SDS-PAGE



SDS-HPLC

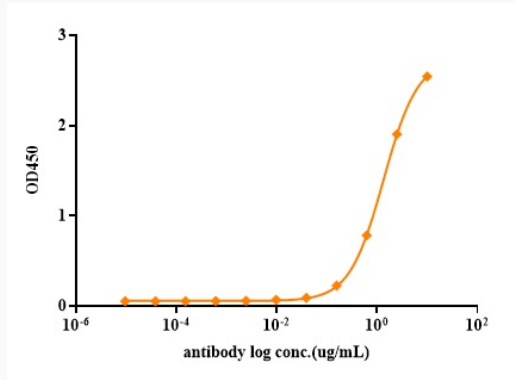


 Tel: 1-631-559-9269 1-516-512-3133

 Email: info@creative-biomart.com  Fax: 1-631-938-8127

 45-1 Ramsey Road, Shirley, NY 11967, USA

ELISA



 Tel: 1-631-559-9269 1-516-512-3133

 Email: info@creative-biomart.com  Fax: 1-631-938-8127

 45-1 Ramsey Road, Shirley, NY 11967, USA