

Recombinant Human CD40LG protein, GST-tagged

Cat. No. CD40LG-5228H Lot. No. (See product label)

SPECIFICATION

Product Overview	Recombinant Human CD40LG protein(P29965)(47-258aa), fused to N-terminal GST tag, was expressed in E. coli.
Species	Human
Source	E.coli
ProteinLength	47-258aa
Form	If the delivery form is liquid, the default storage buffer is Tris/PBS-based buffer, 5%-50% glycerol. If the delivery form is lyophilized powder, the buffer before lyophilization is Tris/PBS-based buffer, 6% Trehalose, pH 8.0.
Molecular Mass	50.8 kDa
Purity	Greater than 90% as determined by SDS-PAGE.
Storage	Store at -20°C/-80°C upon receipt, aliquoting is necessary for multiple use. Avoid repeated freeze-thaw cycles.
Reconstitution	Please reconstitute protein in deionized sterile water to a concentration of 0.1-1.0 mg/mL. We recommend to add 5-50% of glycerol (final concentration) and aliquot for long-term storage at -20°C/-80°C. Our default final concentration of glycerol is 50%.

 Tel: 1-631-559-9269 1-516-512-3133

 Email: info@creative-biomart.com  Fax: 1-631-938-8127

 45-1 Ramsey Road, Shirley, NY 11967, USA

GENE INFORMATION

Gene Name [CD40LG CD40 ligand \[Homo sapiens \]](#)

Official Symbol [CD40LG](#)

Synonyms [CD40LG](#); [CD40 ligand](#); [HIGM1](#), [IMD3](#), [TNFSF5](#), tumor necrosis factor (ligand) superfamily, member 5 (hyper IgM syndrome); [CD40 antigen ligand](#); [CD40L](#); [CD154](#); [gp39](#); [hCD40L](#); [hyper IgM syndrome](#); [T B cell activating molecule](#); [TNF related activation protein](#); [TRAP](#); [tumor necrosis factor \(ligand\) superfamily member 5](#); [CD40-L](#); [T-cell antigen Gp39](#); [T-B cell-activating molecule](#); [TNF-related activation protein](#); [IGM](#); [IMD3](#); [HIGM1](#); [T-BAM](#); [TNFSF5](#);

Gene ID [959](#)

mRNA Refseq [NM_000074](#)

Protein Refseq [NP_000065](#)

MIM [300386](#)

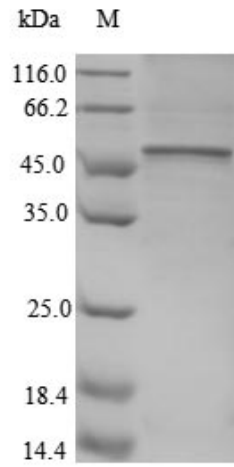
UniProt ID [P29965](#)

 Tel: 1-631-559-9269 1-516-512-3133

 Email: info@creative-biomart.com  Fax: 1-631-938-8127

 45-1 Ramsey Road, Shirley, NY 11967, USA

SDS-PAGE



 Tel: 1-631-559-9269 1-516-512-3133

 Email: info@creative-biomart.com  Fax: 1-631-938-8127

 45-1 Ramsey Road, Shirley, NY 11967, USA