

Recombinant Human CD40LG protein, monomeric hFc-tagged

Cat. No. CD40LG-6887H Lot. No. (See product label)

SPECIFICATION

Product Overview	Recombinant Human CD40LG protein(P29965)(Met113-Leu261), fused with N-terminal monomeric hFc tag, was expressed in HEK293.
Species	Human
Source	HEK293
ProteinLength	Met113-Leu261
Tag	N-monomeric hFc
Form	Lyophilized from 0.22µm filtered solution in PBS (pH 7.4). Normally 5% trehalose is added as protectant before lyophilization.
Bio-activity	Immobilized Human CD40, His Tag at 2µg/ml (100µl/Well) on the plate. Dose response curve for Human CD40 Ligand (Trimer), hFc Tag with the EC50 of 29.8ng/ml determined by ELISA.
Molecular Mass	The protein has a predicted MW of 74.9 kDa. Due to glycosylation, the protein migrates to 75-80 kDa based on Tris-Bis PAGE result.
Endotoxin	Less than 1EU per µg by the LAL method.
Purity	> 95% as determined by Tris-Bis PAGE; > 95% as determined by HPLC

 Tel: 1-631-559-9269 1-516-512-3133

 Email: info@creative-biomart.com  Fax: 1-631-938-8127

 45-1 Ramsey Road, Shirley, NY 11967, USA

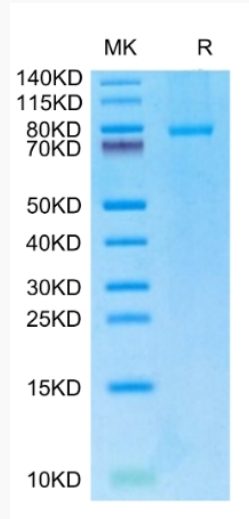
Storage	Reconstituted protein stable at -80°C for 12 months, 4°C for 1 week. Use a manual defrost freezer and avoid repeated freeze-thaw cycles.
Reconstitution	Centrifuge tubes before opening. Reconstituting to a concentration more than 100 µg/ml is recommended. Dissolve the lyophilized protein in distilled water.
GENE INFORMATION	
Gene Name	CD40LG CD40 ligand [Homo sapiens]
Official Symbol	CD40LG
Synonyms	CD40LG; CD40 ligand; HIGM1, IMD3, TNFSF5, tumor necrosis factor (ligand) superfamily, member 5 (hyper IgM syndrome); CD40 antigen ligand; CD40L; CD154; gp39; hCD40L; hyper IgM syndrome; T B cell activating molecule; TNF related activation protein; TRAP; tumor necrosis factor (ligand) superfamily member 5; CD40-L; T-cell antigen Gp39; T-B cell-activating molecule; TNF-related activation protein; IGM; IMD3; HIGM1; T-BAM; TNFSF5;
Gene ID	959
mRNA Refseq	NM_000074
Protein Refseq	NP_000065
MIM	300386
UniProt ID	P29965

 Tel: 1-631-559-9269 1-516-512-3133

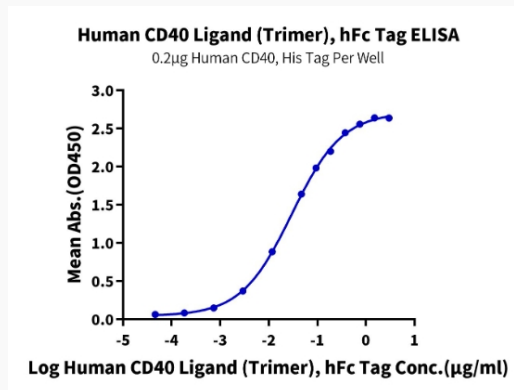
 Email: info@creative-biomart.com  Fax: 1-631-938-8127

 45-1 Ramsey Road, Shirley, NY 11967, USA

Tris-Bis PAGE



ELISA Data



Tel: 1-631-559-9269 1-516-512-3133

Email: info@creative-biomart.com Fax: 1-631-938-8127

45-1 Ramsey Road, Shirley, NY 11967, USA