

Recombinant Human CD40LG protein, His-Flag-tagged, Biotinylated

Cat. No. CD40LG-7865H **Lot. No.** (See product label)

SPECIFICATION

Product Overview	Biotinylated Recombinant Human CD40LG protein(P29965)(Met113-Leu261)(Primary Amine Labeling), fused with N-terminal His-Flag tag, was expressed in HEK293.
Species	Human
Source	HEK293
ProteinLength	Met113-Leu261
Tag	N-His-Flag
Conjugation/Label	Biotin; Primary Amine Labeling
Form	Supplied as 0.22µm filtered solution in PBS (pH 7.4).
Bio-activity	Immobilized Biotinylated Human CD40 Ligand Trimer, His Tag at 2ug/ml (100ul/well) on the streptavidin precoated plate (5ug/ml). Dose response curve for Human CD40, hFc Tag with the EC50 of 0.70ug/ml determined by ELISA.
Molecular Mass	The protein has a predicted MW of 52.4 kDa, Due to glycosylation, the protein migrates to 55-60 kDa based on Tris-Bis PAGE result.
Endotoxin	Less than 1EU per µg by the LAL method.

 Tel: 1-631-559-9269 1-516-512-3133

 Email: info@creative-biomart.com  Fax: 1-631-938-8127

 45-1 Ramsey Road, Shirley, NY 11967, USA

Purity	> 95% as determined by Tris-Bis PAGE;> 95% as determined by HPLC
Storage	Valid for 12 months from date of receipt when stored at -80°C.; Recommend to aliquot the protein into smaller quantities for optimal storage. Please do not repeated freeze-thaw cycles.
Reconstitution	
Conjugation	Biotin
GENE INFORMATION	
Gene Name	CD40LG CD40 ligand [Homo sapiens]
Official Symbol	CD40LG
Synonyms	CD40LG; CD40 ligand; HIGM1, IMD3, TNFSF5, tumor necrosis factor (ligand) superfamily, member 5 (hyper IgM syndrome); CD40 antigen ligand; CD40L; CD154; gp39; hCD40L; hyper IgM syndrome; T B cell activating molecule; TNF related activation protein; TRAP; tumor necrosis factor (ligand) superfamily member 5; CD40-L; T-cell antigen Gp39; T-B cell-activating molecule; TNF-related activation protein; IGM; IMD3; HIGM1; T-BAM; TNFSF5;
Gene ID	959
mRNA Refseq	NM_000074
Protein Refseq	NP_000065
MIM	300386

 Tel: 1-631-559-9269 1-516-512-3133

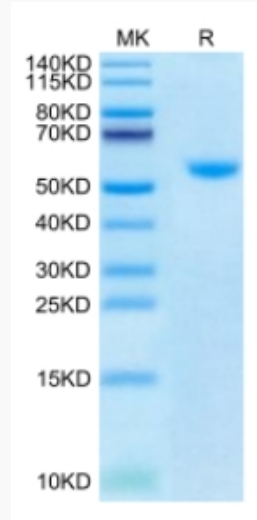
 Email: info@creative-biomart.com  Fax: 1-631-938-8127

 45-1 Ramsey Road, Shirley, NY 11967, USA

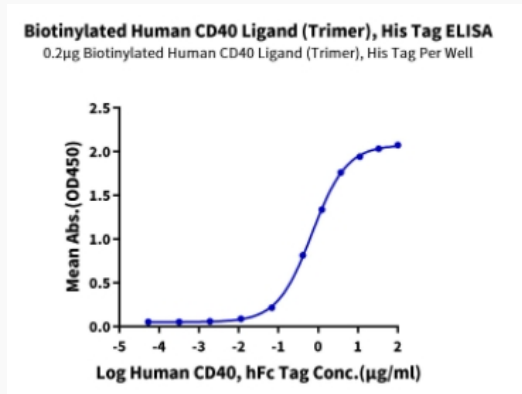
UniProt ID

P29965

Tris-Bis PAGE



ELISA Data



 Tel: 1-631-559-9269 1-516-512-3133

 Email: info@creative-biomart.com  Fax: 1-631-938-8127

 45-1 Ramsey Road, Shirley, NY 11967, USA