

Active Recombinant Full Length Human CD44 Protein, C-Flag-tagged

Cat. No. CD44-143HFL Lot. No. (See product label)

SPECIFICATION

Product Overview

Recombinant Full Length Human CD44 Protein, fused to Flag-tag at C-terminus, was expressed in Mammalian cells.

Species

Human

Source

Mammalian Cells

Description

The protein encoded by this gene is a cell-surface glycoprotein involved in cell-cell interactions, cell adhesion and migration. It is a receptor for hyaluronic acid (HA) and can also interact with other ligands, such as osteopontin, collagens, and matrix metalloproteinases (MMPs). This protein participates in a wide variety of cellular functions including lymphocyte activation, recirculation and homing, hematopoiesis, and tumor metastasis. Transcripts for this gene undergo complex alternative splicing that results in many functionally distinct isoforms, however, the full length nature of some of these variants has not been determined. Alternative splicing is the basis for the structural and functional diversity of this protein, and may be related to tumor metastasis.

Form

25 mM Tris HCl, pH 7.3, 100 mM glycine, 10% glycerol.

Bio-activity


ELISA binding assay

Molecular Mass

79.2 kDa

 Tel: 1-631-559-9269 1-516-512-3133

 Email: info@creative-biomart.com  Fax: 1-631-938-8127

 45-1 Ramsey Road, Shirley, NY 11967, USA

AA Sequence

MDKFWWHAAWGLCLVPLSLAQIDLNITCRFAGVFHVEKNGRYSISRTEAADLCKAF
 NSTLPTMAQMEKAL SIGFETCRYGFIEGHVVIPRIHPNSICAAANTGVYILTSNTSQY
 DTYCFNASAPPEEDCTSVTDLPNAFD GPITITIVNRDGRYVQKGEYRTNPEDIYPS
 NPTDDDVSSGSSSERSSSTSGGYIFYTFSTVHPIPEDDSP WITDSTDRIPATTLMSTS
 ATATETATKRQETWDWFSWFLPSESKNHLHTTTQMAGTSSNTISAGWEPNE ENE
 DERDRHLSFSGSGIDDEDFFISSTISTTPRAFDHTKQNQDWTQWNPSHSNPEVLLQ
 TTRMTDVDRN GTTAYEGNWNPEAHPLIHHEHHEEEETPHSTSTIQATPSSTTEE
 TATQKEQWFGNRWHEGYRQTPKEDS HSTTGTAASAHTSHPMQGRTPSPEDSS
 WTDFFNPI SHPMGRGHQAGRRMDMDSSHSITLQPTANPNTG LVEDLDRTGPLSMT
 TQQSNSQSFSSTHEGLEEDKDHPSTTLTSSNRNDVTGGRRDPNHSEGSTTLLEGY
 TSHYPHTKESRTFIPVTSAKTGSFGVTA VTVGDSNSNVNRSLSGDQDTFHPSGGSH
 TTHGSESDGHS HGS QEGGANTTSGPIRTPQIPEWLIILASLLALILAVCIAVNSRRR
 CGQKKKLVINSGNGAVEDRKPSGLN
 GEASKSQEMVHLVNKESSETPDQFMTAETRNLQNVDKIGVTRTRPLEQKLISEE
 DLAANDILDYKDDDDKV

Purity

> 80% as determined by SDS-PAGE and Coomassie blue staining.

Stability

Stable for 12 months from the date of receipt of the product under proper storage and handling conditions. Avoid repeated freeze-thaw cycles.

Storage

Store at -80 centigrade.

Concentration

>50 ug/mL as determined by microplate BCA method.

Preparation

Recombinant protein was captured through anti-DDK affinity column followed by conventional chromatography steps.

Protein Families

Adult stem cells, Cancer stem cells, Druggable Genome, Embryonic stem cells, ES Cell Differentiation/IPS, Stem cell relevant signaling - DSL/Notch pathway,

 Tel: 1-631-559-9269 1-516-512-3133

 Email: info@creative-biomart.com  Fax: 1-631-938-8127

 45-1 Ramsey Road, Shirley, NY 11967, USA

Transmembrane

Protein Pathways ECM-receptor interaction, Hematopoietic cell lineage

Full Length Full L.

GENE INFORMATION

Gene Name [CD44 CD44 molecule \(Indian blood group\) \[Homo sapiens \(human\) \]](#)

Official Symbol [CD44](#)

Synonyms IN; LHR; MC56; MDU2; MDU3; MIC4; Pgp1; CDW44; CSPG8; H-CAM; HCELL; ECM-III; HUTCH-1; HUTCH-I; ECMR-III; Hermes-1

Gene ID [960](#)

mRNA Refseq [NM_000610.4](#)

Protein Refseq [NP_000601.3](#)

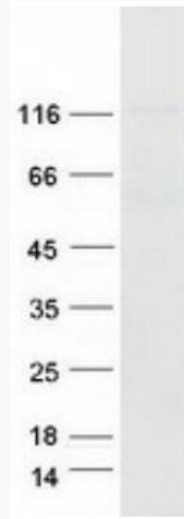
MIM [107269](#)

UniProt ID [P16070](#)

 Tel: 1-631-559-9269 1-516-512-3133

 Email: info@creative-biomart.com  Fax: 1-631-938-8127

 45-1 Ramsey Road, Shirley, NY 11967, USA



Coomassie blue staining of purified CD44 protein.

 Tel: 1-631-559-9269 1-516-512-3133

 Email: info@creative-biomart.com  Fax: 1-631-938-8127

 45-1 Ramsey Road, Shirley, NY 11967, USA