

# Recombinant Cynomolgus monkey CD44 protein, His-tagged

**Cat. No.** CD44-4642C **Lot. No.** (See product label)

## SPECIFICATION

<b>Product Overview</b>	Recombinant Cynomolgus monkey CD44 protein(A0A2K5VJE0)(21-650aa), fused with C-terminal His tag, was expressed in HEK293.
<b>Species</b>	Cynomolgus
<b>Source</b>	HEK293
<b>ProteinLength</b>	21-650aa
<b>Tag</b>	C-His
<b>Form</b>	Lyophilized from a 0.2 um filtered 20 mM Tris-HCl, 0.5 M NaCl, 6% Trehalose, pH 8.0
<b>Bio-activity</b>	Measured by its binding ability in a functional ELISA. Immobilized Macaca fascicularis CD44 at 2 ug/mL can bind Anti-CD44 monoclonal antibody, the EC50 is 64.18-90.91 ng/mL.
<b>Molecular Mass</b>	71.6 kDa
<b>Endotoxin</b>	Less than 1.0 EU/ug as determined by LAL method.
<b>Purity</b>	Greater than 95% as determined by SDS-PAGE.
<b>Storage</b>	Store at -20°C/-80°C upon receipt, aliquoting is necessary for mutiple use. Avoid repeated freeze-thaw cycles.

 Tel: 1-631-559-9269 1-516-512-3133

 Email: [info@creative-biomart.com](mailto:info@creative-biomart.com)  Fax: 1-631-938-8127

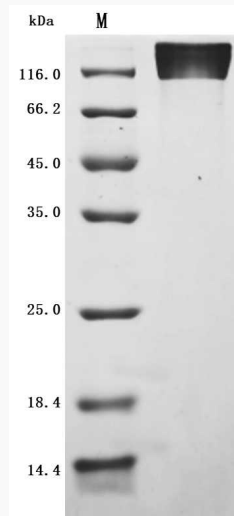
 45-1 Ramsey Road, Shirley, NY 11967, USA

**Reconstitution**

We recommend that this vial be briefly centrifuged prior to opening to bring the contents to the bottom. Please reconstitute protein in deionized sterile water to a concentration of 0.1-1.0 mg/mL. We recommend to add 5-50% of glycerol (final concentration) and aliquot for long-term storage at -20°C/-80°C.

**AA Sequence**

QIDLNITCRFAGVFHVEKNGRYSISRTEAADLCKAFNSTLPTMAQMEKALSVGFETC  
 RYGFIEGHVVIPRIQPNSICAAANHTGVYILTSNTSQYDTYCFNASAPPKEDCTSVTDL  
 PNAFDGPITIVNPDGTRYIKKGEYRTNPEDIYPSNPTDDDVS SSGSSERSSTSGGYI  
 FHTFSTAHPIDEDGPWITDSTDRIPATTLMSTSATATETATKRQETQDWFSWFLFP  
 SESKNHLHTTTQMAGTSSNTISAGWEPNEENEDERDRHLSFSGSGIDDED FISS TI  
 STTPRVFDHTKQNKDWTQWNPSHSNPEVLLQTTARITADVDRNGTTAHEGNWNPE  
 AHPPLIHHEHHEEEETPHSTSTIQAI P S S T T E E T A T Q K E Q W F G N R W H E G Y L Q T P R E D  
 SHSTTGTAASALTSHPMQGRTPSPEDSSWTDFFDPISHPMGRGHQAGRRMDM  
 DSSHSTTLQPTADPNTGLVEDLDR TG P L S M T T K Q S N S Q S F S T S H E G L E E D K D H P T T  
 STLTSSNRNDVTGGRRDPNHSEGSTTLLEGY T S H Y P D T K E S R T F I P V T S A K T G S F G V  
 TEVTVGDSNSNVNHSLSGDQDAFYP S G S H T T H G S E S A G H S H G S Q E G G A N T T S G  
 PVRTPQIPE

**SDS-PAGE**


Tel: 1-631-559-9269 1-516-512-3133

Email: [info@creative-biomart.com](mailto:info@creative-biomart.com) Fax: 1-631-938-8127

45-1 Ramsey Road, Shirley, NY 11967, USA