

## Recombinant Human CD46 Protein, hFc-tagged

Cat. No. CD46-031H Lot. No. (See product label)

### SPECIFICATION

<b>Product Overview</b>	Recombinant Human CD46 Protein(Cys35-Asp343), fused with hFc tag, was expressed in HEK293.
<b>Species</b>	Human
<b>Source</b>	HEK293
<b>ProteinLength</b>	Cys35-Asp343
<b>Form</b>	Lyophilized from 0.22 µm filtered solution in PBS, pH7.4.
<b>Molecular Mass</b>	The protein has a calculated MW of 60kDa.The reducing (R) heterodimer protein migrates as 70-100 kDa due to glycosylation
<b>Endotoxin</b>	<1EU/mg
<b>Purity</b>	SDS-PAGE>90%SEC>95%
<b>Storage</b>	Store at -20°C.
<b>Reconstitution</b>	It is recommended that sterile water be added to the vial to prepare a stock solution of 0.2 ug/ul. Centrifuge the vial at 4°C before opening to recover the entire contents.

### GENE INFORMATION

 Tel: 1-631-559-9269 1-516-512-3133

 Email: [info@creative-biomart.com](mailto:info@creative-biomart.com)  Fax: 1-631-938-8127

 45-1 Ramsey Road, Shirley, NY 11967, USA

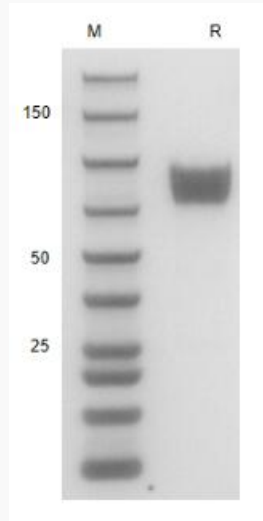
<b>Gene Name</b>	CD46 CD46 molecule, complement regulatory protein [ Homo sapiens ]
<b>Official Symbol</b>	CD46
<b>Synonyms</b>	CD46; CD46 molecule, complement regulatory protein; antigen identified by monoclonal TRA 2 10 , CD46 antigen, complement regulatory protein , MCP, membrane cofactor protein (CD46, trophoblast lymphocyte cross reactive antigen) , MIC10; membrane cofactor protein; MGC26544; TLX; TRA2.10; measles virus receptor; complement membrane cofactor protein; trophoblast leucocyte common antigen; trophoblast leukocyte common antigen; CD46 antigen, complement regulatory protein; trophoblast-lymphocyte cross-reactive antigen; antigen identified by monoclonal TRA-2-10; membrane cofactor protein (CD46, trophoblast-lymphocyte cross-reactive antigen); MCP; AHUS2; MIC10;
<b>Gene ID</b>	4179
<b>mRNA Refseq</b>	NM_002389
<b>Protein Refseq</b>	NP_002380
<b>MIM</b>	120920
<b>UniProt ID</b>	P15529

 Tel: 1-631-559-9269 1-516-512-3133

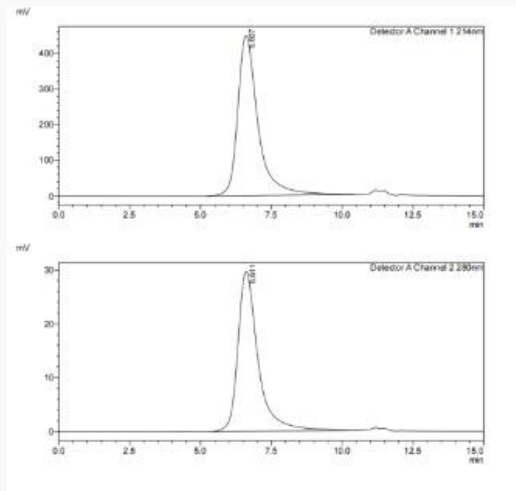
 Email: [info@creative-biomart.com](mailto:info@creative-biomart.com)  Fax: 1-631-938-8127

 45-1 Ramsey Road, Shirley, NY 11967, USA

**SDS-PAGE**



**SDS-HPLC**



 Tel: 1-631-559-9269 1-516-512-3133

 Email: [info@creative-biomart.com](mailto:info@creative-biomart.com)  Fax: 1-631-938-8127

 45-1 Ramsey Road, Shirley, NY 11967, USA