

Recombinant Human CD46 Protein (Cys35-Asp325), N-His tagged

Cat. No. CD46-1506H Lot. No. (See product label)

SPECIFICATION

Product Overview	Recombinant Human CD46 (Cys35-Asp325) fused with the N-His tag was expressed in E. coli.
Species	Human
Source	E.coli
ProteinLength	Cys35-Asp325
Form	Lyophilized powder/frozen liquid
Molecular Mass	34.78 kDa
Purity	>90% as determined by SDS-PAGE.
Notes	For research use only.
Storage	Use a manual defrost freezer and avoid repeated freeze thaw cycles. Store at 2 to 8 centigrade for one week. Store at -20 to -80 centigrade for twelve months from the date of receipt.
Storage Buffer	0.01M PBS, pH 7.4, 0.02% NLS
Reconstitution	Reconstitute in sterile water for a stock solution.

 Tel: 1-631-559-9269 1-516-512-3133

 Email: info@creative-biomart.com  Fax: 1-631-938-8127

 45-1 Ramsey Road, Shirley, NY 11967, USA

Shipping They are shipped out with dry ice/blue ice unless customers require otherwise.

GENE INFORMATION

Gene Name CD46 CD46 molecule, complement regulatory protein [Homo sapiens (human)]

Official Symbol CD46

Synonyms CD46; CD46 molecule, complement regulatory protein; antigen identified by monoclonal TRA 2 10, CD46 antigen, complement regulatory protein, MCP, membrane cofactor protein (CD46, trophoblast lymphocyte cross reactive antigen), MIC10; membrane cofactor protein; MGC26544; TLX; TRA2.10; measles virus receptor; complement membrane cofactor protein; trophoblast leucocyte common antigen; trophoblast leukocyte common antigen; CD46 antigen, complement regulatory protein; trophoblast-lymphocyte cross-reactive antigen; antigen identified by monoclonal TRA-2-10; membrane cofactor protein (CD46, trophoblast-lymphocyte cross-reactive antigen); MCP; AHUS2; MIC10;

Gene ID 4179

mRNA Refseq NM_002389

Protein Refseq NP_002380

MIM 120920

UniProt ID P15529

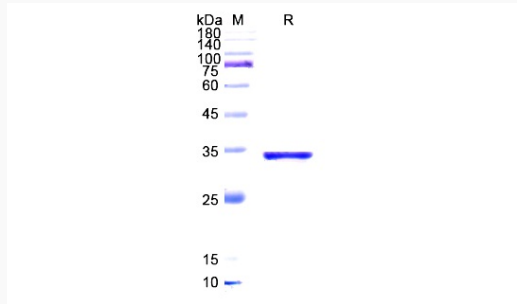
 Tel: 1-631-559-9269 1-516-512-3133

 Email: info@creative-biomart.com  Fax: 1-631-938-8127

 45-1 Ramsey Road, Shirley, NY 11967, USA



SDS-PAGE



Tel: 1-631-559-9269 1-516-512-3133

Email: info@creative-biomart.com Fax: 1-631-938-8127

45-1 Ramsey Road, Shirley, NY 11967, USA