

# Recombinant Human CD46 Protein (Val147-Lys285), N-His tagged

Cat. No. CD46-1507H    Lot. No. (See product label)

## SPECIFICATION

<b>Product Overview</b>	Recombinant Human CD46 (Val147-Lys285) fused with the N-His tag was expressed in E. coli.
<b>Species</b>	Human
<b>Source</b>	E.coli
<b>ProteinLength</b>	Val147-Lys285
<b>Form</b>	Lyophilized powder/frozen liquid
<b>Molecular Mass</b>	17.67 kDa
<b>Purity</b>	>90% as determined by SDS-PAGE.
<b>Notes</b>	For research use only.
<b>Storage</b>	Use a manual defrost freezer and avoid repeated freeze thaw cycles. Store at 2 to 8 centigrade for one week. Store at -20 to -80 centigrade for twelve months from the date of receipt.
<b>Storage Buffer</b>	0.01M PBS, pH 7.4, 0.02% NLS
<b>Reconstitution</b>	Reconstitute in sterile water for a stock solution.

 Tel: 1-631-559-9269    1-516-512-3133

 Email: [info@creative-biomart.com](mailto:info@creative-biomart.com)     Fax: 1-631-938-8127

 45-1 Ramsey Road, Shirley, NY 11967, USA

**Shipping** They are shipped out with dry ice/blue ice unless customers require otherwise.

## GENE INFORMATION

**Gene Name** CD46 CD46 molecule, complement regulatory protein [ Homo sapiens (human) ]

**Official Symbol** CD46

**Synonyms** CD46; CD46 molecule, complement regulatory protein; antigen identified by monoclonal TRA 2 10, CD46 antigen, complement regulatory protein, MCP, membrane cofactor protein (CD46, trophoblast lymphocyte cross reactive antigen), MIC10; membrane cofactor protein; MGC26544; TLX; TRA2.10; measles virus receptor; complement membrane cofactor protein; trophoblast leucocyte common antigen; trophoblast leukocyte common antigen; CD46 antigen, complement regulatory protein; trophoblast-lymphocyte cross-reactive antigen; antigen identified by monoclonal TRA-2-10; membrane cofactor protein (CD46, trophoblast-lymphocyte cross-reactive antigen); MCP; AHUS2; MIC10;

**Gene ID** 4179

**mRNA Refseq** NM\_002389

**Protein Refseq** NP\_002380

**MIM** 120920

**UniProt ID** P15529

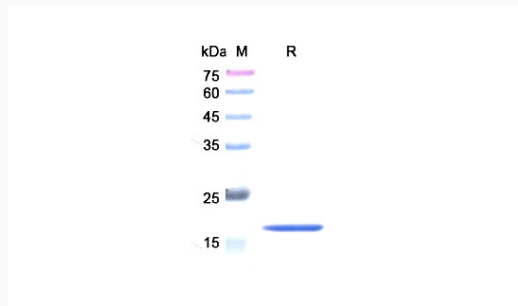
 Tel: 1-631-559-9269 1-516-512-3133

 Email: [info@creative-biomart.com](mailto:info@creative-biomart.com)  Fax: 1-631-938-8127

 45-1 Ramsey Road, Shirley, NY 11967, USA



SDS-PAGE



Tel: 1-631-559-9269 1-516-512-3133

Email: [info@creative-biomart.com](mailto:info@creative-biomart.com) Fax: 1-631-938-8127

45-1 Ramsey Road, Shirley, NY 11967, USA