

Recombinant Human CD46 protein, rFc-tagged

Cat. No. CD46-3735H Lot. No. (See product label)

SPECIFICATION

Product Overview	Recombinant Human CD46 protein(P15529-11)(Cys35-Asp328), fused with C-terminal rFc tag, was expressed in HEK293.
Species	Human
Source	HEK293
Form	Lyophilized from 0.22 µm filtered solution in PBS, pH 7.4. Normally 5% trehalose and 5% mannitol are added as protectants before lyophilization.
Molecular Mass	59.1 kDa
Endotoxin	<0.1 EU/µg protein, LAL method
Purity	>90 %, SDS-PAGE
Storage	It is recommended that the protein be aliquoted for optimal storage. Avoid repeated freeze-thaw cycles. Until expiry date, -20°C to -80°C as lyophilized proteins. 3 months, -20°C to -80°C under sterile conditions after reconstitution.
Reconstitution	Briefly centrifuge the tube before opening. Reconstitute at 0.1-0.5 mg/mL in sterile water.

GENE INFORMATION

 Tel: 1-631-559-9269 1-516-512-3133

 Email: info@creative-biomart.com  Fax: 1-631-938-8127

 45-1 Ramsey Road, Shirley, NY 11967, USA

Gene Name	CD46 CD46 molecule, complement regulatory protein [Homo sapiens]
Official Symbol	CD46
Synonyms	CD46; CD46 molecule, complement regulatory protein; antigen identified by monoclonal TRA 2 10 , CD46 antigen, complement regulatory protein , MCP, membrane cofactor protein (CD46, trophoblast lymphocyte cross reactive antigen) , MIC10; membrane cofactor protein; MGC26544; TLX; TRA2.10; measles virus receptor; complement membrane cofactor protein; trophoblast leucocyte common antigen; trophoblast leukocyte common antigen; CD46 antigen, complement regulatory protein; trophoblast-lymphocyte cross-reactive antigen; antigen identified by monoclonal TRA-2-10; membrane cofactor protein (CD46, trophoblast-lymphocyte cross-reactive antigen); MCP; AHUS2; MIC10;
Gene ID	4179
mRNA Refseq	NM_002389
Protein Refseq	NP_002380
MIM	120920
UniProt ID	P15529

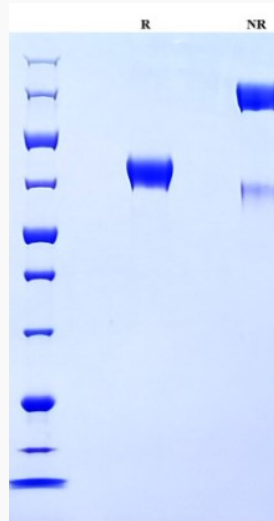
 Tel: 1-631-559-9269 1-516-512-3133

 Email: info@creative-biomart.com  Fax: 1-631-938-8127

 45-1 Ramsey Road, Shirley, NY 11967, USA



SDS-PAGE



Tel: 1-631-559-9269 1-516-512-3133

Email: info@creative-biomart.com Fax: 1-631-938-8127

45-1 Ramsey Road, Shirley, NY 11967, USA