

Recombinant Human CD46 protein, His-tagged

Cat. No. CD46-3962H **Lot. No.** (See product label)

SPECIFICATION

Product Overview	Recombinant Human CD46 (Cys35-Asp328) protein was fused to His-tag at C-terminus and expressed in human 293 cells (HEK293).
Species	Human
Source	HEK293
ProteinLength	Cys35-Asp328
Description	Complement regulatory protein CD46 is also known as membrane Cofactor Protein (MCP), is a type I membrane protein and is a regulatory part of the complement system. CD46 is expressed by all cells except erythrocytes. MCP acts as a cofactor for complement factor I, a serine protease which protects autologous cells against complement-mediated injury by cleaving C3b and C4b deposited on host tissue, and also acts as a costimulatory factor for T-cells which induces the differentiation of CD4+ into T-regulatory 1 cells. In T-cells by binding to CD46, A number of viral and bacterial pathogens seem to exploit this property and directly induce an immunosuppressive phenotype. Defects in CD46 are a cause of susceptibility to hemolytic uremic syndrome atypical type 2 (AHUS2).
Predicted N Terminal	Cys35
Form	Lyophilized from 0.22 µm filtered solution in PBS, pH7.4, 10% trehalose.
Molecular Mass	The protein has a calculated MW of 33.6 kDa. The protein migrates as 55-60 kDa

 Tel: 1-631-559-9269 1-516-512-3133

 Email: info@creative-biomart.com  Fax: 1-631-938-8127

 45-1 Ramsey Road, Shirley, NY 11967, USA

under reducing (R) condition (SDS-PAGE) due to glycosylation.

Endotoxin Less than 1.0 EU per µg by the LAL method.

Purity >95% as determined by SDS-PAGE.

Storage

For long term storage, the product should be stored at lyophilized state at -20 centigrade or lower.

Please avoid repeated freeze-thaw cycles.

This product is stable after storage at:

- 20 to -70 centigrade for 12 months in lyophilized state;
- 70 centigrade for 3 months under sterile conditions after reconstitution.

Reconstitution It is recommended that sterile water be added to the vial to prepare a stock solution of 0.2 ug/ul. Centrifuge the vial at 4°C before opening to recover the entire contents.

GENE INFORMATION

Gene Name CD46

Official Symbol CD46

Synonyms CD46; CD46 molecule, complement regulatory protein; antigen identified by monoclonal TRA 2 10 , CD46 antigen, complement regulatory protein , MCP, membrane cofactor protein (CD46, trophoblast lymphocyte cross reactive antigen), MIC10; membrane cofactor protein; MGC26544; TLX; TRA2.10; measles virus receptor; complement membrane cofactor protein; trophoblast leucocyte common antigen; trophoblast leukocyte common antigen; CD46 antigen, complement regulatory protein; trophoblast-lymphocyte cross-reactive antigen; antigen identified by monoclonal TRA-2-10; membrane cofactor protein (CD46, trophoblast-lymphocyte

 Tel: 1-631-559-9269 1-516-512-3133

 Email: info@creative-biomart.com  Fax: 1-631-938-8127

 45-1 Ramsey Road, Shirley, NY 11967, USA

cross-reactive antigen); MCP; AHUS2; MIC10

Gene ID [4179](#)

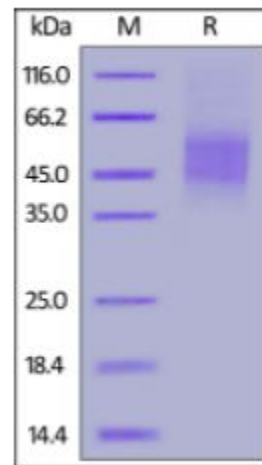
mRNA Refseq [NM_002389](#)

Protein Refseq [NP_002380](#)

MIM [120920](#)

UniProt ID [P15529](#)

SDS-PAGE of CD46-3962H



Human CD46, His Tag on SDS-PAGE under reducing (R) condition. The gel was stained overnight with Coomassie Blue. The purity of the protein is greater than 95%.

 Tel: 1-631-559-9269 1-516-512-3133

 Email: info@creative-biomart.com  Fax: 1-631-938-8127

 45-1 Ramsey Road, Shirley, NY 11967, USA