

## Recombinant Human CD46 protein, His-tagged

**Cat. No.** CD46-6744H    **Lot. No.** (See product label)

### SPECIFICATION

<b>Product Overview</b>	Recombinant Human CD46 protein(P15529-1)(Cys35-Asp343), fused with C-terminal His tag, was expressed in HEK293.
<b>Species</b>	Human
<b>Source</b>	HEK293
<b>ProteinLength</b>	Cys35-Asp343
<b>Tag</b>	C-His
<b>Form</b>	Supplied as 0.22µm filtered solution in PBS (pH 7.4).
<b>Bio-activity</b>	Immobilized Human CD46, His Tag at 0.5µg/ml (100µl/Well) on the plate. Dose response curve for Anti-CD46 Antibody, hFc Tag with the EC50 of 4.2ng/ml determined by ELISA.
<b>Molecular Mass</b>	The protein has a predicted MW of 35.4 kDa. Due to glycosylation, the protein migrates to 60-70 kDa based on Tris-Bis PAGE result.
<b>Endotoxin</b>	Less than 1EU per µg by the LAL method.
<b>Purity</b>	> 95% as determined by Tris-Bis PAGE;> 95% as determined by HPLC
<b>Storage</b>	Valid for 12 months from date of receipt when stored at -80°C. Recommend to aliquot

 Tel: 1-631-559-9269    1-516-512-3133

 Email: [info@creative-biomart.com](mailto:info@creative-biomart.com)     Fax: 1-631-938-8127

 45-1 Ramsey Road, Shirley, NY 11967, USA

the protein into smaller quantities for optimal storage. Please do not repeated freeze-thaw cycles.

**Reconstitution**

It is recommended that sterile water be added to the vial to prepare a stock solution of 0.2 ug/ul. Centrifuge the vial at 4°C before opening to recover the entire contents.

## GENE INFORMATION

**Gene Name** [CD46 CD46 molecule, complement regulatory protein \[ Homo sapiens \]](#)

**Official Symbol** [CD46](#)

**Synonyms**

CD46; CD46 molecule, complement regulatory protein; antigen identified by monoclonal TRA 2 10 , CD46 antigen, complement regulatory protein , MCP , membrane cofactor protein (CD46, trophoblast lymphocyte cross reactive antigen) , MIC10; membrane cofactor protein; MGC26544; TLX; TRA2.10; measles virus receptor; complement membrane cofactor protein; trophoblast leucocyte common antigen; trophoblast leukocyte common antigen; CD46 antigen, complement regulatory protein; trophoblast-lymphocyte cross-reactive antigen; antigen identified by monoclonal TRA-2-10; membrane cofactor protein (CD46, trophoblast-lymphocyte cross-reactive antigen); MCP; AHUS2; MIC10;

**Gene ID** [4179](#)

**mRNA Refseq** [NM\\_002389](#)

**Protein Refseq** [NP\\_002380](#)

**MIM** [120920](#)

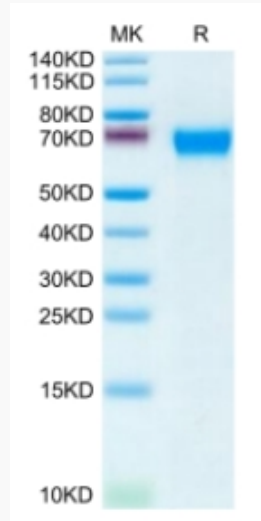
**UniProt ID** [P15529](#)

 Tel: 1-631-559-9269 1-516-512-3133

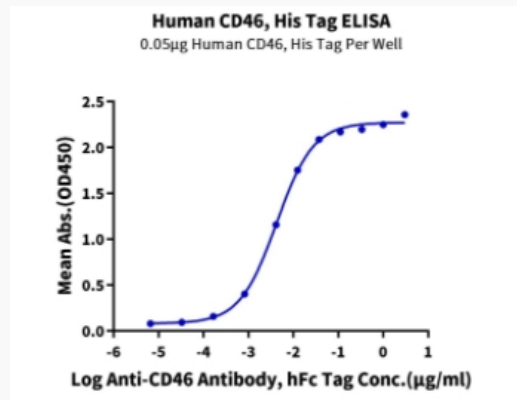
 Email: [info@creative-biomart.com](mailto:info@creative-biomart.com)  Fax: 1-631-938-8127

 45-1 Ramsey Road, Shirley, NY 11967, USA

**Tris-Bis PAGE**



**ELISA Data**



 Tel: 1-631-559-9269 1-516-512-3133

 Email: [info@creative-biomart.com](mailto:info@creative-biomart.com)  Fax: 1-631-938-8127

 45-1 Ramsey Road, Shirley, NY 11967, USA