

## Recombinant Human CD47 Protein (Gln19-Pro139), N-His tagged

**Cat. No.** CD47-1239H    **Lot. No.** (See product label)

### SPECIFICATION

<b>Product Overview</b>	Recombinant Human CD47/MER6 (Gln19-Pro139) fused with the N-His tag was expressed in E. coli.
<b>Species</b>	Human
<b>Source</b>	E.coli
<b>ProteinLength</b>	Gln19-Pro139
<b>Form</b>	Lyophilized powder/frozen liquid
<b>Molecular Mass</b>	16.03 kDa
<b>Purity</b>	>90% as determined by SDS-PAGE.
<b>Notes</b>	For research use only.
<b>Storage</b>	Use a manual defrost freezer and avoid repeated freeze thaw cycles. Store at 2 to 8 centigrade for one week. Store at -20 to -80 centigrade for twelve months from the date of receipt.
<b>Storage Buffer</b>	0.01M PBS, pH 7.4, 0.02% NLS
<b>Reconstitution</b>	Reconstitute in sterile water for a stock solution.

 Tel: 1-631-559-9269    1-516-512-3133

 Email: [info@creative-biomart.com](mailto:info@creative-biomart.com)     Fax: 1-631-938-8127

 45-1 Ramsey Road, Shirley, NY 11967, USA

**Shipping** They are shipped out with dry ice/blue ice unless customers require otherwise.

## GENE INFORMATION

**Gene Name** [CD47 CD47 molecule \[ Homo sapiens \(human\) \]](#)

**Official Symbol** [CD47](#)

**Synonyms** CD47; CD47 molecule; CD47 antigen (Rh related antigen, integrin associated signal transducer), MER6; leukocyte surface antigen CD47; antigen identified by monoclonal 1D8; antigenic surface determinant protein OA3; CD47 glycoprotein; IAP; integrin associated protein; OA3; Rh related antigen; Rh-related antigen; integrin-associated protein; integrin-associated signal transducer; CD47 antigen (Rh-related antigen, integrin-associated signal transducer); MER6;

**Gene ID** [961](#)

**mRNA Refseq** [NM\\_001777](#)

**Protein Refseq** [NP\\_001768](#)

**MIM** [601028](#)

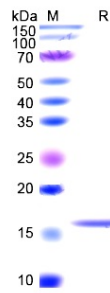
**UniProt ID** [Q08722](#)

 Tel: 1-631-559-9269 1-516-512-3133

 Email: [info@creative-biomart.com](mailto:info@creative-biomart.com)  Fax: 1-631-938-8127

 45-1 Ramsey Road, Shirley, NY 11967, USA

**SDS-PAGE**



 Tel: 1-631-559-9269 1-516-512-3133

 Email: [info@creative-biomart.com](mailto:info@creative-biomart.com)  Fax: 1-631-938-8127

 45-1 Ramsey Road, Shirley, NY 11967, USA