

## Recombinant Human CD47 Protein (Met1-Glu141), C-His tagged

Cat. No. CD47-1276H    Lot. No. (See product label)

### SPECIFICATION

<b>Product Overview</b>	Recombinant human CD47 (Met1-Glu141) fused with the C-terminal His tag was expressed in Mammalian cells.
<b>Species</b>	Human
<b>Source</b>	Mammalian Cells
<b>ProteinLength</b>	Met1-Glu141
<b>Form</b>	Lyophilized powder/frozen liquid
<b>Molecular Mass</b>	15.32 kDa
<b>Purity</b>	>90% as determined by SDS-PAGE.
<b>Notes</b>	For research use only.
<b>Storage</b>	Use a manual defrost freezer and avoid repeated freeze thaw cycles. Store at 2 to 8 centigrade for one week. Store at -20 to -80 centigrade for twelve months from the date of receipt.
<b>Storage Buffer</b>	Supplied as solution form in 50 mM Tris-HCl, pH 7.5, 150 mM NaCl or lyophilized from 50 mM Tris-HCl, pH 7.5, 150 mM NaCl.

 Tel: 1-631-559-9269    1-516-512-3133

 Email: [info@creative-biomart.com](mailto:info@creative-biomart.com)     Fax: 1-631-938-8127

 45-1 Ramsey Road, Shirley, NY 11967, USA

**Reconstitution** Reconstitute in sterile water for a stock solution.

**Shipping** They are shipped out with dry ice/blue ice unless customers require otherwise.

## GENE INFORMATION

**Gene Name** CD47 CD47 molecule [ Homo sapiens (human) ]

**Official Symbol** CD47

**Synonyms**

CD47; CD47 molecule; CD47 antigen (Rh related antigen, integrin associated signal transducer), MER6; leukocyte surface antigen CD47; antigen identified by monoclonal 1D8; antigenic surface determinant protein OA3; CD47 glycoprotein; IAP; integrin associated protein; OA3; Rh related antigen; Rh-related antigen; integrin-associated protein; integrin-associated signal transducer; CD47 antigen (Rh-related antigen, integrin-associated signal transducer); MER6;

**Gene ID** 961

**mRNA Refseq** NM\_001777

**Protein Refseq** NP\_001768

**MIM** 601028

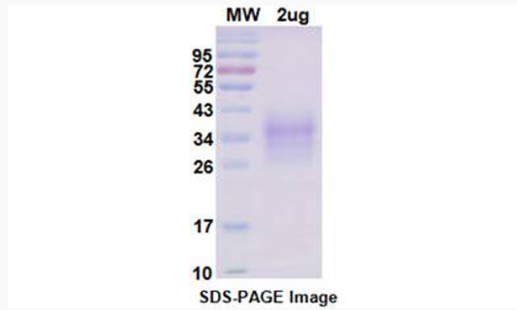
**UniProt ID** Q08722

 Tel: 1-631-559-9269 1-516-512-3133

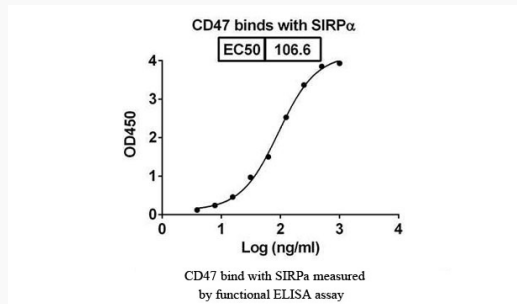
 Email: [info@creative-biomart.com](mailto:info@creative-biomart.com)  Fax: 1-631-938-8127

 45-1 Ramsey Road, Shirley, NY 11967, USA

**SDS-PAGE**



**Activity**



 Tel: 1-631-559-9269 1-516-512-3133

 Email: [info@creative-biomart.com](mailto:info@creative-biomart.com)  Fax: 1-631-938-8127

 45-1 Ramsey Road, Shirley, NY 11967, USA