

Recombinant Cynomolgus/Rhesus macaque CD47 protein, His-tagged

Cat. No. CD47-346C **Lot. No.** (See product label)

SPECIFICATION

Product Overview	Recombinant Cynomolgus/Rhesus macaque CD47 protein (Gln19-Glu141), fused to His tag at C-terminus, was expressed in human 293 cells (HEK293). In the region Gln19-Glu141, the AA sequence of Cynomolgus and Rhesus macaque CD47 are homologous.
Species	Cynomolgus/Rhesus macaque
Source	HEK293
ProteinLength	123
Description	Leukocyte surface antigen CD47 is also known as Antigenic surface determinant protein OA3, Integrin-associated protein (IAP) and Protein MER6. CD47 contains 1 Ig-like V-type (immunoglobulin-like) domain. CD47 is very broadly distributed on normal adult tissues. CD47 has a role in both cell adhesion by acting as an adhesion receptor for THBS1 on platelets, and in the modulation of integrins and plays an important role in memory formation and synaptic plasticity in the hippocampus by similarity. CD47 is the receptor for SIRPA, binding to which prevents maturation of immature dendritic cells and inhibits cytokine production by mature dendritic cells. CD47 Interaction with SIRPG mediates cell-cell adhesion, enhances superantigen-dependent T-cell-mediated proliferation and costimulates T-cell activation.
Form	Lyophilized from 0.22 um filtered solution in PBS, pH7.4, 10% trehalose.

 Tel: 1-631-559-9269 1-516-512-3133

 Email: info@creative-biomart.com  Fax: 1-631-938-8127

 45-1 Ramsey Road, Shirley, NY 11967, USA

Molecular Mass	The protein has a calculated MW of 15.8 kDa. The protein migrates as 30-50 kDa under reducing (R) condition (SDS-PAGE) due to glycosylation.
Endotoxin	Less than 1.0 EU per ug by the LAL method.
Purity	>95% as determined by SDS-PAGE.
Storage	For long term storage, the product should be stored at lyophilized state at -20 centigrade or lower. Please avoid repeated freeze-thaw cycles. This product is stable after storage at: -20 centigrade to -70 centigrade for 12 months in lyophilized state; -70 centigrade for 3 months under sterile conditions after reconstitution.
Reconstitution	It is recommended that sterile water be added to the vial to prepare a stock solution of 0.2 ug/ul. Centrifuge the vial at 4°C before opening to recover the entire contents.

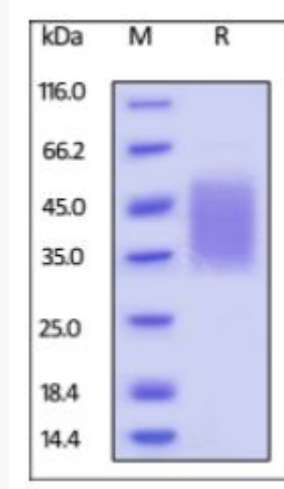
GENE INFORMATION

Gene Name	CD47
Official Symbol	CD47
Synonyms	IAP; MER6; OA3
Gene ID	704980
mRNA Refseq	NM_001266517.1
Protein Refseq	NP_001253446.1

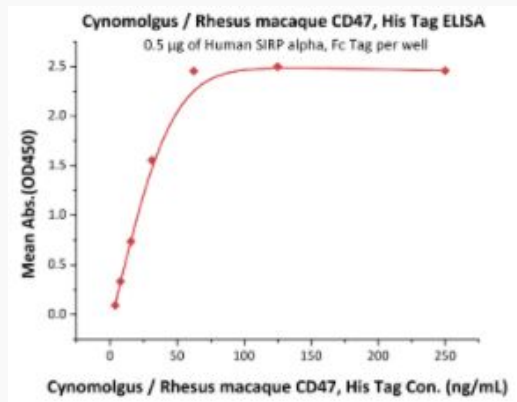
 Tel: 1-631-559-9269 1-516-512-3133

 Email: info@creative-biomart.com  Fax: 1-631-938-8127

 45-1 Ramsey Road, Shirley, NY 11967, USA

UniProt ID
F7A802
SDS-PAGE of CD47-346C


Cynomolgus/Rhesus macaque CD47, His Tag on SDS-PAGE under reducing (R) condition. The gel was stained overnight with Coomassie Blue. The purity of the protein is greater than 95%.

Bioactivity-ELISA of CD47-346C


Immobilized Human SIRP alpha, Fc Tag at 5 µg/mL (100 µL/well) can bind Cynomolgus/Rhesus macaque CD47, His Tag with a linear range of 4-63 ng/mL

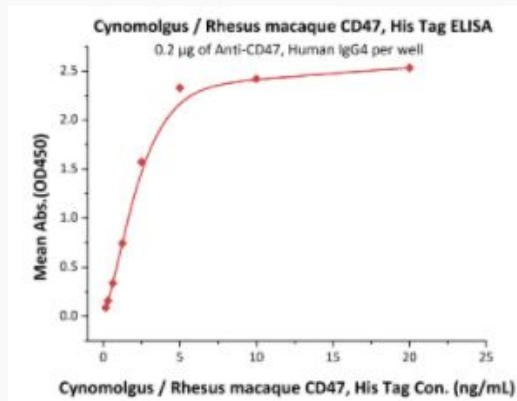
 Tel: 1-631-559-9269 1-516-512-3133

 Email: info@creative-biomart.com  Fax: 1-631-938-8127

 45-1 Ramsey Road, Shirley, NY 11967, USA

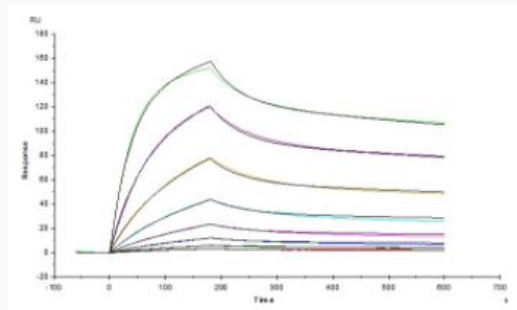
(QC tested).

**Bioactivity-ELISA of
CD47-346C**



Immobilized Anti-CD47, Human IgG4 at 2 µg/mL (100 µL/well) can bind Cynomolgus/Rhesus macaque CD47, His Tag with a linear range of 0.2-5 ng/mL (Routinely tested).


**Bioactivity-SPR of
CD47-346C**



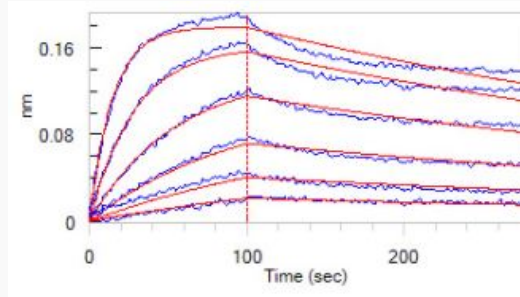
Anti-CD47 Mab (Human IgG4) captured on CM5 chip via anti-human IgG Fc antibodies surface, can bind Cynomolgus/Rhesus macaque CD47, His Tag with an affinity constant of 1.8 nM as determined in a SPR assay (Routinely tested).

 Tel: 1-631-559-9269 1-516-512-3133

 Email: info@creative-biomart.com  Fax: 1-631-938-8127

 45-1 Ramsey Road, Shirley, NY 11967, USA


**Bioactivity-BLI of
CD47-346C**



Loaded Anti-Human CD47 MAb (Human IgG4) on AHC Biosensor, can bind Cynomolgus/Rhesus macaque CD47, His Tag with an affinity constant of 2.93 nM as determined in BLI assay (Routinely tested).

 Tel: 1-631-559-9269 1-516-512-3133

 Email: info@creative-biomart.com  Fax: 1-631-938-8127

 45-1 Ramsey Road, Shirley, NY 11967, USA