

Recombinant Human CD47 protein, hFc-tagged

Cat. No. CD47-527H Lot. No. (See product label)

SPECIFICATION

Product Overview	Recombinant Human CD47 protein(Q08722-1)(Gln19-Pro139), fused with C-terminal hFc tag, was expressed in HEK293.
Species	Human
Source	HEK293
ProteinLength	Gln19-Pro139
Tag	C-hFc
Form	Lyophilized from 0.22µm filtered solution in PBS (pH 7.4). Normally 5% trehalose is added as protectant before lyophilization.
Bio-activity	Immobilized Human SIRP alpha, His Tag at 1µg/ml (100µl/Well) on the plate. Dose response curve for Human CD47, hFc Tag with the EC50 of 5.0ng/ml determined by ELISA.
Molecular Mass	The protein has a predicted MW of 40.5 kDa. Due to glycosylation, the protein migrates to 55-65 kDa based on Tris-Bis PAGE result.
Endotoxin	Less than 1EU per µg by the LAL method.
Purity	> 95% as determined by Tris-Bis PAGE; > 95% as determined by HPLC

 Tel: 1-631-559-9269 1-516-512-3133

 Email: info@creative-biomart.com  Fax: 1-631-938-8127

 45-1 Ramsey Road, Shirley, NY 11967, USA

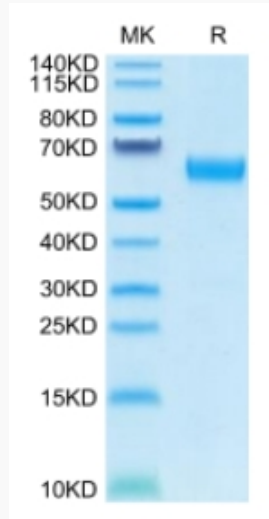
Storage	Reconstituted protein stable at -80°C for 12 months, 4°C for 1 week. Use a manual defrost freezer and avoid repeated freeze-thaw cycles.
Reconstitution	Centrifuge tubes before opening. Reconstituting to a concentration more than 100 µg/ml is recommended. Dissolve the lyophilized protein in distilled water.
GENE INFORMATION	
Gene Name	CD47 CD47 molecule [Homo sapiens]
Official Symbol	CD47
Synonyms	CD47; CD47 molecule; CD47 antigen (Rh related antigen, integrin associated signal transducer) , MER6; leukocyte surface antigen CD47; antigen identified by monoclonal 1D8; antigenic surface determinant protein OA3; CD47 glycoprotein; IAP; integrin associated protein; OA3; Rh related antigen; Rh-related antigen; integrin-associated protein; integrin-associated signal transducer; CD47 antigen (Rh-related antigen, integrin-associated signal transducer); MER6;
Gene ID	961
mRNA Refseq	NM_001777
Protein Refseq	NP_001768
MIM	601028
UniProt ID	Q08722

 Tel: 1-631-559-9269 1-516-512-3133

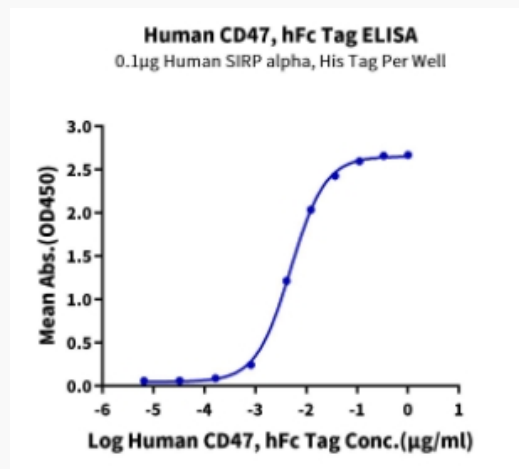
 Email: info@creative-biomart.com  Fax: 1-631-938-8127

 45-1 Ramsey Road, Shirley, NY 11967, USA

Tris-Bis PAGE



ELISA Data



 Tel: 1-631-559-9269 1-516-512-3133

 Email: info@creative-biomart.com  Fax: 1-631-938-8127

 45-1 Ramsey Road, Shirley, NY 11967, USA