

## Recombinant Human CD48 Protein, C-His-tagged

Cat. No. CD48-200H Lot. No. (See product label)

### SPECIFICATION

<b>Product Overview</b>	Recombinant Human CD48 Protein with C-His tag was expressed in E. coli.
<b>Species</b>	Human
<b>Source</b>	E.coli
<b>Description</b>	CD48 is a glycosylphosphatidylinositol (GPI) -anchored membrane protein of the signaling lymphocyte activation molecule (SLAM) family, also known as SLAMF2 and BLAST-1. It is constitutively expressed on most hematopoietic cells (not on neutrophils and a subset of long-term hematopoietic stem cells in mice) and can be upregulated under certain conditions like infection. Interaction with its low affinity ligand CD2 promotes adhesion and TCR signaling. Interaction with the high affinity ligand CD244 (2B4) regulates natural killer (NK) and CD8 T cell activation and cytolytic function.
<b>Molecular Mass</b>	~21 kDa
<b>AA Sequence</b>	QGHLVHMTVVSGSNVTLNISESLPENYKQLTWFYTFDQKIVEWDSRKSKEYFESKFK GRVRLDPQSGALYISKVQKEDNSTYIMRVLKKKTGNEQEWKIKLQVLDPVPKPKVIKIEKI EDMDDNCYLKLSCVIPGESVNYTWYGDKRPFKELQNSVLETTLMPHNYSRCYTCQ VSNSVSSKNGTVCLSPPTLARS
<b>Purity</b>	Transferred into competent cells and the supernatant was purified by NI column affinity chromatography and the purity is > 85% (by SDS-PAGE).

 Tel: 1-631-559-9269 1-516-512-3133

 Email: [info@creative-biomart.com](mailto:info@creative-biomart.com)  Fax: 1-631-938-8127

 45-1 Ramsey Road, Shirley, NY 11967, USA

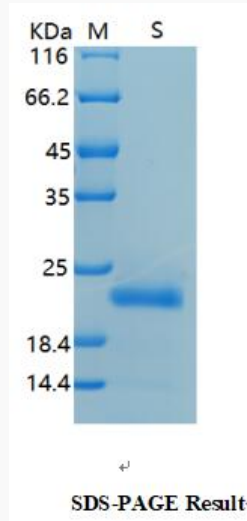
<b>Notes</b>	For research use only, not for use in diagnostic procedure.
<b>Storage</b>	Store at 4 centigrade short term. Aliquot and store at -20 centigrade long term. Avoid freeze-thaw cycles.
<b>Concentration</b>	≥0.5 mg/mL
<b>Storage Buffer</b>	PBS, 4M Urea, pH7.4
<b>GENE INFORMATION</b>	
<b>Gene Name</b>	CD48 CD48 molecule [ Homo sapiens (human) ]
<b>Official Symbol</b>	CD48
<b>Synonyms</b>	CD48; CD48 molecule; BCM1, CD48 antigen (B cell membrane protein) , CD48 molecule; CD48 antigen; BLAST; hCD48; mCD48; SLAMF2; TCT.1; BCM1 surface antigen; leukocyte antigen MEM-102; B-lymphocyte activation marker BLAST-1; CD48 antigen (B-cell membrane protein); BCM1; BLAST1; MEM-102;
<b>Gene ID</b>	962
<b>mRNA Refseq</b>	NM_001256030
<b>Protein Refseq</b>	NP_001242959
<b>MIM</b>	109530
<b>UniProt ID</b>	P09326

 Tel: 1-631-559-9269 1-516-512-3133

 Email: [info@creative-biomart.com](mailto:info@creative-biomart.com)  Fax: 1-631-938-8127

 45-1 Ramsey Road, Shirley, NY 11967, USA

**SDS-PAGE**



 Tel: 1-631-559-9269 1-516-512-3133

 Email: [info@creative-biomart.com](mailto:info@creative-biomart.com)  Fax: 1-631-938-8127

 45-1 Ramsey Road, Shirley, NY 11967, USA