

## Recombinant Human CD48 protein, hFc-tagged

Cat. No. CD48-234H Lot. No. (See product label)

### SPECIFICATION

<b>Product Overview</b>	Recombinant Human CD48 protein(P09326-1)(Gln27-Ser220), fused with C-terminal hFc tag, was expressed in HEK293.
<b>Species</b>	Human
<b>Source</b>	HEK293
<b>ProteinLength</b>	Gln27-Ser220
<b>Tag</b>	C-hFc
<b>Form</b>	Lyophilized from 0.22µm filtered solution in PBS (pH 7.4). Normally 5% trehalose is added as protectant before lyophilization.
<b>Bio-activity</b>	Immobilized Human 2B4, His Tag at 1µg/ml (100µl/well) on the plate. Dose response curve for Human CD48, hFc Tag with the EC50 of 0.34µg/ml determined by ELISA.
<b>Molecular Mass</b>	The protein has a predicted MW of 48.9 kDa. Due to glycosylation, the protein migrates to 60-70 kDa based on Tris-Bis PAGE result.
<b>Endotoxin</b>	Less than 1EU per µg by the LAL method.
<b>Purity</b>	> 95% as determined by Tris-Bis PAGE; > 95% as determined by HPLC
<b>Storage</b>	Reconstituted protein stable at -80°C for 12 months, 4°C for 1 week. Use a manual

 Tel: 1-631-559-9269 1-516-512-3133

 Email: [info@creative-biomart.com](mailto:info@creative-biomart.com)  Fax: 1-631-938-8127

 45-1 Ramsey Road, Shirley, NY 11967, USA

defrost freezer and avoid repeated freeze-thaw cycles.

**Reconstitution**

Centrifuge tubes before opening. Reconstituting to a concentration more than 100 µg/ml is recommended. Dissolve the lyophilized protein in distilled water.

## GENE INFORMATION

**Gene Name** [CD48 CD48 molecule \[ Homo sapiens \]](#)

**Official Symbol** [CD48](#)

**Synonyms**

CD48; CD48 molecule; BCM1, CD48 antigen (B cell membrane protein) , CD48 molecule; CD48 antigen; BLAST; hCD48; mCD48; SLAMF2; TCT.1; BCM1 surface antigen; leukocyte antigen MEM-102; B-lymphocyte activation marker BLAST-1; CD48 antigen (B-cell membrane protein); BCM1; BLAST1; MEM-102;

**Gene ID** [962](#)

**mRNA Refseq** [NM\\_001256030](#)

**Protein Refseq** [NP\\_001242959](#)

**MIM** [109530](#)

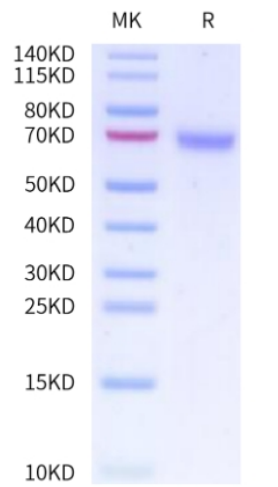
**UniProt ID** [P09326](#)

 Tel: 1-631-559-9269 1-516-512-3133

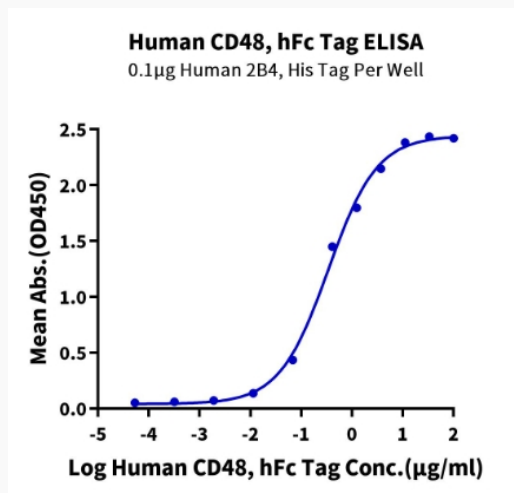
 Email: [info@creative-biomart.com](mailto:info@creative-biomart.com)  Fax: 1-631-938-8127

 45-1 Ramsey Road, Shirley, NY 11967, USA

**Tris-Bis PAGE**



**ELISA Data**



Tel: 1-631-559-9269 1-516-512-3133

Email: [info@creative-biomart.com](mailto:info@creative-biomart.com) Fax: 1-631-938-8127

45-1 Ramsey Road, Shirley, NY 11967, USA