

Active Recombinant Human CD48 protein, hFc-tagged

Cat. No. CD48-252H Lot. No. (See product label)

SPECIFICATION

Product Overview	Active Recombinant Human CD48 protein(P09326-1)(Gln27-Ser220) is expressed from HEK293 with hFc (IgG1) tag at the C-Terminus.
Species	Human
Source	HEK293
ProteinLength	27-220 aa
Form	Lyophilized from 0.22µm filtered solution in PBS (pH 7.4).
Bio-activity	Immobilized Human 2B4, His Tag at 1µg/ml (100µl/well) on the plate. Dose response curve for Human CD48, hFc Tag with the EC50 of 0.34µg/ml determined by ELISA.
Molecular Mass	The protein has a predicted MW of 48.9 kDa. Due to glycosylation, the protein migrates to 62-72 kDa based on Bis-Tris PAGE result.
Endotoxin	Less than 1 EU per µg by the LAL method.
Purity	> 95% as determined by Bis-Tris PAGE > 95% as determined by HPLC
Storage	-20 to -80°C for 12 months as supplied from date of receipt. -80°C for 3 months after reconstitution. Recommend to aliquot the protein into smaller quantities for optimal storage. Please minimize freeze-thaw cycles.

 Tel: 1-631-559-9269 1-516-512-3133

 Email: info@creative-biomart.com  Fax: 1-631-938-8127

 45-1 Ramsey Road, Shirley, NY 11967, USA

Reconstitution Dissolve the lyophilized protein in distilled water.

GENE INFORMATION

Gene Name [CD48 CD48 molecule \[Homo sapiens \]](#)

Official Symbol [CD48](#)

Synonyms CD48; CD48 molecule; BCM1, CD48 antigen (B cell membrane protein) , CD48 molecule; CD48 antigen; BLAST; hCD48; mCD48; SLAMF2; TCT.1; BCM1 surface antigen; leukocyte antigen MEM-102; B-lymphocyte activation marker BLAST-1; CD48 antigen (B-cell membrane protein); BCM1; BLAST1; MEM-102;

Gene ID [962](#)

mRNA Refseq [NM_001256030](#)

Protein Refseq [NP_001242959](#)

MIM [109530](#)

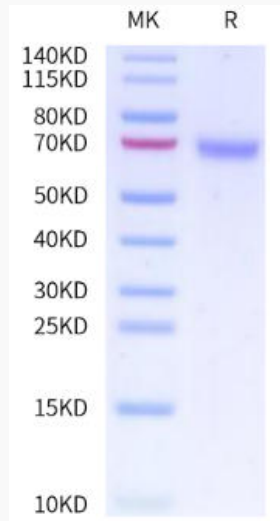
UniProt ID [P09326](#)

 Tel: 1-631-559-9269 1-516-512-3133

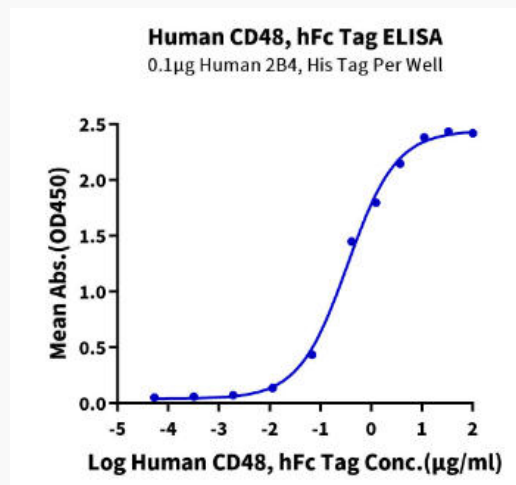
 Email: info@creative-biomart.com  Fax: 1-631-938-8127

 45-1 Ramsey Road, Shirley, NY 11967, USA

Bis-Tris PAGE



ELISA Data



Tel: 1-631-559-9269 1-516-512-3133

Email: info@creative-biomart.com Fax: 1-631-938-8127

45-1 Ramsey Road, Shirley, NY 11967, USA