

Recombinant Human CD48 Protein (Gln27-Ser220), C-hFc-tagged

Cat. No. CD48-509H Lot. No. (See product label)

SPECIFICATION

Product Overview	Recombinant Human CD48 Protein (Gln27-Ser220) with C-hFc tag was expressed in HEK293.
Species	Human
Source	HEK293
ProteinLength	Gln27-Ser220
Description	<p>This gene encodes a member of the CD2 subfamily of immunoglobulin-like receptors which includes SLAM (signaling lymphocyte activation molecules) proteins. The encoded protein is found on the surface of lymphocytes and other immune cells, dendritic cells and endothelial cells, and participates in activation and differentiation pathways in these cells. The encoded protein does not have a transmembrane domain, however, but is held at the cell surface by a GPI anchor via a C-terminal domain which maybe cleaved to yield a soluble form of the receptor. Multiple transcript variants encoding different isoforms have been found for this gene.</p>
Form	Lyophilized
Molecular Mass	48.5 kDa
Purity	> 95% as determined by SDS-PAGE and Coomassie blue staining.

 Tel: 1-631-559-9269 1-516-512-3133

 Email: info@creative-biomart.com  Fax: 1-631-938-8127

 45-1 Ramsey Road, Shirley, NY 11967, USA

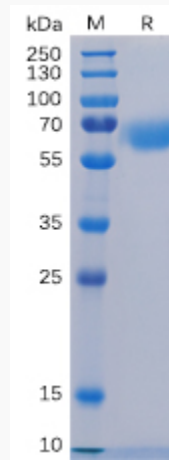
Storage	Store at -80 centigrade for 12 months (Avoid repeated freezing and thawing)
Storage Buffer	Lyophilized from sterile PBS, pH 7.4. Normally 5 % - 84 % trehalose is added as protectants before lyophilization.
GENE INFORMATION	
Gene Name	CD48 CD48 molecule [Homo sapiens (human)]
Official Symbol	CD48
Synonyms	CD48; CD48 molecule; BCM1, CD48 antigen (B cell membrane protein) , CD48 molecule; CD48 antigen; BLAST; hCD48; mCD48; SLAMF2; TCT.1; BCM1 surface antigen; leukocyte antigen MEM-102; B-lymphocyte activation marker BLAST-1; CD48 antigen (B-cell membrane protein); BCM1; BLAST1; MEM-102;
Gene ID	962
mRNA Refseq	NM_001256030
Protein Refseq	NP_001242959
MIM	109530
UniProt ID	P09326

 Tel: 1-631-559-9269 1-516-512-3133

 Email: info@creative-biomart.com  Fax: 1-631-938-8127

 45-1 Ramsey Road, Shirley, NY 11967, USA

SDS-PAGE



 Tel: 1-631-559-9269 1-516-512-3133

 Email: info@creative-biomart.com  Fax: 1-631-938-8127

 45-1 Ramsey Road, Shirley, NY 11967, USA