

## Recombinant Human CD48 Protein (Met1-Ser220), C-His tagged

Cat. No. CD48-5356H Lot. No. (See product label)

### SPECIFICATION

<b>Product Overview</b>	Recombinant human CD48 (Met1-Ser220) fused with the C-terminal His tag was expressed in Mammalian cells.
<b>Species</b>	Human
<b>Source</b>	Mammalian Cells
<b>ProteinLength</b>	Met1-Ser220
<b>Form</b>	Lyophilized powder/frozen liquid
<b>Molecular Mass</b>	24.31 kDa
<b>Endotoxin</b>	< 1.0 EU/μg of the protein as determined by the LAL method.
<b>Purity</b>	>90% as determined by SDS-PAGE.
<b>Notes</b>	For research use only.
<b>Storage</b>	Use a manual defrost freezer and avoid repeated freeze thaw cycles. Store at 2 to 8 centigrade for one week. Store at -20 to -80 centigrade for twelve months from the date of receipt.
<b>Storage Buffer</b>	Supplied as solution form in PBS or lyophilized from PBS.

 Tel: 1-631-559-9269 1-516-512-3133

 Email: [info@creative-biomart.com](mailto:info@creative-biomart.com)  Fax: 1-631-938-8127

 45-1 Ramsey Road, Shirley, NY 11967, USA

**Reconstitution** Reconstitute in sterile water for a stock solution.

**Shipping** They are shipped out with dry ice/blue ice unless customers require otherwise.

## GENE INFORMATION

**Gene Name** CD48 CD48 molecule [ Homo sapiens (human) ]

**Official Symbol** CD48

**Synonyms** CD48; CD48 molecule; BCM1, CD48 antigen (B cell membrane protein), CD48 molecule; CD48 antigen; BLAST; hCD48; mCD48; SLAMF2; TCT.1; BCM1 surface antigen; leukocyte antigen MEM-102; B-lymphocyte activation marker BLAST-1; CD48 antigen (B-cell membrane protein); BCM1; BLAST1; MEM-102;

**Gene ID** 962

**mRNA Refseq** NM\_001256030

**Protein Refseq** NP\_001242959

**MIM** 109530

**UniProt ID** P09326

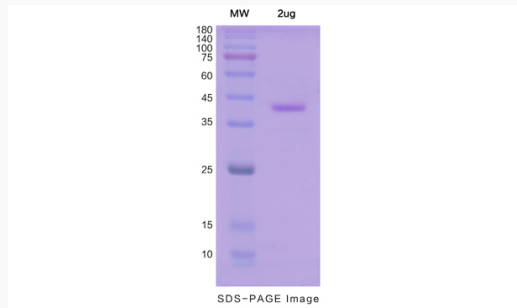
 Tel: 1-631-559-9269 1-516-512-3133

 Email: [info@creative-biomart.com](mailto:info@creative-biomart.com)  Fax: 1-631-938-8127

 45-1 Ramsey Road, Shirley, NY 11967, USA



## SDS-PAGE



Tel: 1-631-559-9269 1-516-512-3133

Email: [info@creative-biomart.com](mailto:info@creative-biomart.com) Fax: 1-631-938-8127

45-1 Ramsey Road, Shirley, NY 11967, USA