

Recombinant Human CD5 Protein, GST-Tagged

Cat. No. CD5-0830H **Lot. No.** (See product label)

SPECIFICATION

Product Overview	Human CD5 full-length ORF (ABM83003.1, 1 a.a. - 495 a.a.) recombinant protein with GST-tag at N-terminal.
Species	Human
Source	Wheat Germ
Description	This gene encodes a member of the scavenger receptor cysteine-rich (SRCR) superfamily. Members of this family are secreted or membrane-anchored proteins mainly found in cells associated with the immune system. This protein is a type-I transmembrane glycoprotein found on the surface of thymocytes, T lymphocytes and a subset of B lymphocytes. The encoded protein contains three SRCR domains and may act as a receptor to regulate T-cell proliferation. Alternative splicing results in multiple transcript variants encoding different isoforms. [provided by RefSeq, Oct 2016]
Molecular Mass	80.96 kDa
AA Sequence	MPMGS LQPLATLYLLGMLVASCLGRLSWYDPDFQARLTRSNSKCGQLLEVYLKDG WHMVCSQSWGRSSKQWEDPSQASKVCQRLNCGVPLSLGPFLVITYTPQSSIICYGQ LGSFSNCSHSRNDMCHSLGLTCLEPQKTTPTTRPPPTTTPEPTAPPRLQLVAQSG GQHCAGVVEFYSGSLGGTISYEAQDKTQDLENFLC>NNLQCGSFLKHLPETEAGRAQ DPGEPREHQPLPIQWKIQNSSCTSLEHCFRKIKPQKSGRVLALLCSGFQPKVQSRLV GGSSICEGTVEVRQGAQWAALCDSSSARSSLRWEEVCREQQCGSVNSYRVLDAG

 Tel: 1-631-559-9269 1-516-512-3133

 Email: info@creative-biomart.com  Fax: 1-631-938-8127

 45-1 Ramsey Road, Shirley, NY 11967, USA



DPTSRGLFCPHQKLSQCHELWERNYSYCKKVFVTCQDPNPAGLAAGTVASIILALVLL
 VVLLVVCGLAYKKLKLVKKFRQKKQRQWIGPTGMNQNMFSHRNHTATVRSCHAENPT
 ASHVDNEYSQPPRNSRLSAYPALEGVLHRSSMQPDNSSSDSYDLHGAQRL

Applications
 Enzyme-linked Immunoabsorbent Assay
 Western Blot (Recombinant protein)
 Antibody Production
 Protein Array

Storage Store at -80 centigrade. Aliquot to avoid repeated freezing and thawing.

Storage Buffer 50 mM Tris-HCl, 10 mM reduced Glutathione, pH=8.0 in the elution buffer.

GENE INFORMATION

Gene Name CD5 CD5 molecule [Homo sapiens]

Official Symbol CD5

Synonyms CD5; CD5 molecule; CD5 antigen (p56 62), LEU1; T-cell surface glycoprotein CD5; T1; CD5 antigen (p56-62); lymphocyte antigen T1/Leu-1; LEU1;

Gene ID 921

mRNA Refseq NM_014207

Protein Refseq NP_055022

MIM 153340

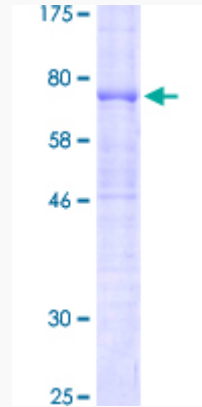
UniProt ID P06127

Tel: 1-631-559-9269 1-516-512-3133

Email: info@creative-biomart.com Fax: 1-631-938-8127

45-1 Ramsey Road, Shirley, NY 11967, USA

**Quality Control
Testing**



12.5% SDS-PAGE Stained with Coomassie Blue

 Tel: 1-631-559-9269 1-516-512-3133

 Email: info@creative-biomart.com  Fax: 1-631-938-8127

 45-1 Ramsey Road, Shirley, NY 11967, USA