

Recombinant Full Length Human CD5 Protein, C-Flag-tagged

Cat. No. CD5-1438HFL Lot. No. (See product label)

SPECIFICATION

Product Overview	Recombinant Full Length Human CD5 Protein, fused to Flag-tag at C-terminus, was expressed in Mammalian cells.
Species	Human
Source	Mammalian Cells
Description	This gene encodes a member of the scavenger receptor cysteine-rich (SRCR) superfamily. Members of this family are secreted or membrane-anchored proteins mainly found in cells associated with the immune system. This protein is a type-I transmembrane glycoprotein found on the surface of thymocytes, T lymphocytes and a subset of B lymphocytes. The encoded protein contains three SRCR domains and may act as a receptor to regulate T-cell proliferation. Alternative splicing results in multiple transcript variants encoding different isoforms.
Form	25 mM Tris HCl, pH 7.3, 100 mM glycine, 10% glycerol.
Molecular Mass	54.4 kDa
AA Sequence	MPMGSLQPLATLYLLGMLVASCLGRLSWYDPDFQARLTRSNSKCGQLEVYLKDG WHMVCSSQSWGRSSKQ WEDPSQASKVCQRLNCGVPLSLGPFLVITYTPQSSIICYG QLGSFSNCSHSRNDMCHSLGLTCLPQKTP PTTRPPPTTTPEPTAPPRLQLVAQS GGQHCAGVVEFYSGSLGGTISYEAQDKTQDLENFLC>NNLQCGSFL KHLPETEAGR AQDPGEPREHQPLPIQWKIQNSSCTSLEHCFR KIKPKQKSGRVLALLCSGFQPKVQS RLVG GSSICEGTVEVRQGAQWAALCDSSSARSSLRWEEVCREQQCGSVNSYRVL

 Tel: 1-631-559-9269 1-516-512-3133

 Email: info@creative-biomart.com  Fax: 1-631-938-8127

 45-1 Ramsey Road, Shirley, NY 11967, USA

DAGDPTSRGLFCPHQKLSQC HELWERNSYCKKVFVTCQDPNPAGLAAGTVASIILA
 LVLLVVLLVVCPLAYKLVKKFRQKKQRQWIGP TGMNQNMFSHRNHTATVRS
 ENPTASHVDNEYSQPPRNSRLSAYPALEGVLHRSSMQPDNSSDSYDLH
 GAQRLTRTRPLEQKLISEEDLAANDILDYKDDDDKV

Purity	> 80% as determined by SDS-PAGE and Coomassie blue staining.
Stability	Stable for 12 months from the date of receipt of the product under proper storage and handling conditions. Avoid repeated freeze-thaw cycles.
Storage	Store at -80 centigrade.
Concentration	>50 ug/mL as determined by microplate BCA method.
Preparation	Recombinant protein was captured through anti-DDK affinity column followed by conventional chromatography steps.
Protein Families	Druggable Genome, Transmembrane
Protein Pathways	Hematopoietic cell lineage
Full Length	Full L.

GENE INFORMATION

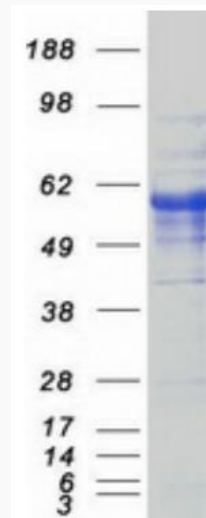
Gene Name	CD5 CD5 molecule [Homo sapiens (human)]
Official Symbol	CD5
Synonyms	T1; LEU1

 Tel: 1-631-559-9269 1-516-512-3133

 Email: info@creative-biomart.com  Fax: 1-631-938-8127

 45-1 Ramsey Road, Shirley, NY 11967, USA

Gene ID	921
mRNA Refseq	NM_014207.4
Protein Refseq	NP_055022.2
MIM	153340
UniProt ID	P06127



Coomassie blue staining of purified CD5 protein.

Tel: 1-631-559-9269 1-516-512-3133

Email: info@creative-biomart.com Fax: 1-631-938-8127

45-1 Ramsey Road, Shirley, NY 11967, USA