

## Recombinant Human CD5 molecule Protein, Tag Free

Cat. No. CD5-198H Lot. No. (See product label)

### SPECIFICATION

<b>Product Overview</b>	Recombinant human CD5 protein (P06127) (Arg 25-Pro 372) without tag was expressed in HEK293.
<b>Species</b>	Human
<b>Source</b>	HEK293
<b>ProteinLength</b>	25-372aa
<b>Description</b>	This gene encodes a member of the scavenger receptor cysteine-rich (SRCR) superfamily. Members of this family are secreted or membrane-anchored proteins mainly found in cells associated with the immune system. This protein is a type-I transmembrane glycoprotein found on the surface of thymocytes, T lymphocytes and a subset of B lymphocytes. The encoded protein contains three SRCR domains and may act as a receptor to regulate T-cell proliferation. Alternative splicing results in multiple transcript variants encoding different isoforms.
<b>Tag</b>	Non
<b>Molecular Mass</b>	39 kDa
<b>Endotoxin</b>	Less than 1.0 EU/μg by the LAL method.
<b>Purity</b>	>95% as determined by SDS-PAGE.

 Tel: 1-631-559-9269 1-516-512-3133

 Email: [info@creative-biomart.com](mailto:info@creative-biomart.com)  Fax: 1-631-938-8127

 45-1 Ramsey Road, Shirley, NY 11967, USA

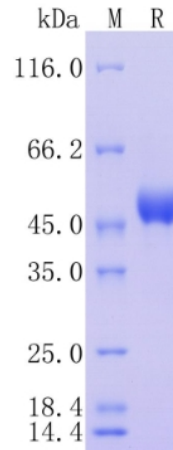
<b>Storage</b>	Please avoid repeated freeze-thaw cycles. Samples are stable for up to twelve months from date of receipt at -20 to -80 centigrade. It is recommended that aliquot the reconstituted solution to minimize freeze-thaw cycles.
<b>Storage Buffer</b>	Lyophilized from a 0.2 µm filtered solution of PBS, pH7.4, 5% Trehalose, 5% mannitol.
<b>Reconstitution</b>	Reconstitute at 250 µg/mL in sterile water.
<b>GENE INFORMATION</b>	
<b>Gene Name</b>	CD5 CD5 molecule [ Homo sapiens (human) ]
<b>Official Symbol</b>	CD5
<b>Synonyms</b>	CD5; CD5 molecule; CD5 antigen (p56 62), LEU1; T-cell surface glycoprotein CD5; T1; CD5 antigen (p56-62); lymphocyte antigen T1/Leu-1; LEU1;
<b>Gene ID</b>	921
<b>mRNA Refseq</b>	NM_014207
<b>Protein Refseq</b>	NP_055022
<b>MIM</b>	153340
<b>UniProt ID</b>	P06127

 Tel: 1-631-559-9269 1-516-512-3133

 Email: [info@creative-biomart.com](mailto:info@creative-biomart.com)  Fax: 1-631-938-8127

 45-1 Ramsey Road, Shirley, NY 11967, USA

**Protein on SDS-  
PAGE under  
reducing (R)  
condition.**



 Tel: 1-631-559-9269 1-516-512-3133

 Email: [info@creative-biomart.com](mailto:info@creative-biomart.com)  Fax: 1-631-938-8127

 45-1 Ramsey Road, Shirley, NY 11967, USA