

Recombinant Human CD5 protein, hFc-Avi-tagged

Cat. No. CD5-6713H Lot. No. (See product label)

SPECIFICATION

Product Overview	Recombinant Human CD5 protein(P06127)(Arg25-Asn371), fused with C-terminal hFc-Avi tag, was expressed in HEK293.
Species	Human
Source	HEK293
ProteinLength	Arg25-Asn371
Tag	C-hFc-Avi
Form	Lyophilized from 0.22µm filtered solution in PBS (pH 7.4). Normally 5% trehalose is added as protectant before lyophilization.
Bio-activity	Immobilized Human CD5 at 1µg/ml (100µl/Well) on the plate. Dose response curve for Biotinylated Anti-CD5 Antibody, hFc Tag with the EC50 24.0ng/ml determined by ELISA.
Molecular Mass	The protein has a predicted MW of 67.1 kDa. Due to glycosylation, the protein migrates to 75-82 kDa based on Tris-Bis PAGE result.
Endotoxin	Less than 1EU per µg by the LAL method.
Purity	> 95% as determined by Tris-Bis PAGE; > 95% as determined by HPLC

 Tel: 1-631-559-9269 1-516-512-3133

 Email: info@creative-biomart.com  Fax: 1-631-938-8127

 45-1 Ramsey Road, Shirley, NY 11967, USA

Storage Reconstituted protein stable at -80°C for 12 months, 4°C for 1 week. Use a manual defrost freezer and avoid repeated freeze-thaw cycles.

Reconstitution Centrifuge tubes before opening. Reconstituting to a concentration more than 100 µg/ml is recommended. Dissolve the lyophilized protein in distilled water.

GENE INFORMATION

Gene Name [CD5 CD5 molecule \[Homo sapiens \]](#)

Official Symbol [CD5](#)

Synonyms CD5; CD5 molecule; CD5 antigen (p56 62) , LEU1; T-cell surface glycoprotein CD5; T1; CD5 antigen (p56-62); lymphocyte antigen T1/Leu-1; LEU1;

Gene ID [921](#)

mRNA Refseq [NM_014207](#)

Protein Refseq [NP_055022](#)

MIM [153340](#)

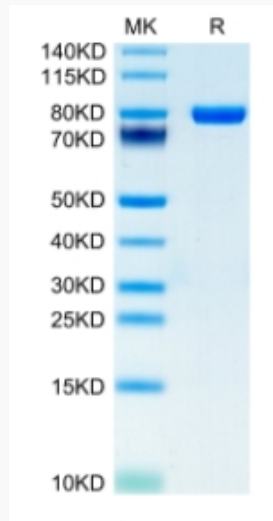
UniProt ID [P06127](#)

 Tel: 1-631-559-9269 1-516-512-3133

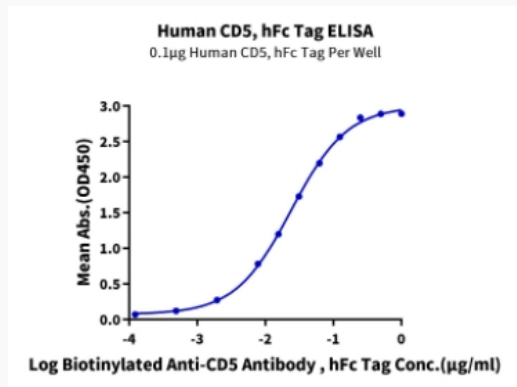
 Email: info@creative-biomart.com  Fax: 1-631-938-8127

 45-1 Ramsey Road, Shirley, NY 11967, USA

Tris-Bis PAGE



ELISA Data



 Tel: 1-631-559-9269 1-516-512-3133

 Email: info@creative-biomart.com  Fax: 1-631-938-8127

 45-1 Ramsey Road, Shirley, NY 11967, USA