

## Recombinant Human CD52 Protein (Met1-Ser61), C-Fc tagged

Cat. No. CD52-3899H Lot. No. (See product label)

### SPECIFICATION

<b>Product Overview</b>	Recombinant human CD52 (Met1-Ser61) fused with the C-terminal Fc tag was expressed in mammalian cells.
<b>Species</b>	Human
<b>Source</b>	Mammalian Cells
<b>ProteinLength</b>	Met1-Ser61
<b>Form</b>	Lyophilized powder/frozen liquid
<b>Molecular Mass</b>	30.17 kDa
<b>Endotoxin</b>	< 1.0 EU/μg of the protein as determined by the LAL method.
<b>Purity</b>	>90% as determined by SDS-PAGE.
<b>Notes</b>	For research use only.
<b>Storage</b>	Use a manual defrost freezer and avoid repeated freeze thaw cycles. Store at 2 to 8 centigrade for one week. Store at -20 to -80 centigrade for twelve months from the date of receipt.
<b>Storage Buffer</b>	Supplied as solution form in PBS, pH 7.4 or lyophilized from PBS, pH 7.4.

 Tel: 1-631-559-9269 1-516-512-3133

 Email: [info@creative-biomart.com](mailto:info@creative-biomart.com)  Fax: 1-631-938-8127

 45-1 Ramsey Road, Shirley, NY 11967, USA

**Reconstitution** Reconstitute in sterile water for a stock solution.

**Shipping** They are shipped out with dry ice/blue ice unless customers require otherwise.

## GENE INFORMATION

**Gene Name** CD52 CD52 molecule [ Homo sapiens (human) ]

**Official Symbol** CD52

**Synonyms** CD52; CD52 molecule; CD52 antigen (CAMPATH 1 antigen), CDW52; CAMPATH-1 antigen; he5; cambridge pathology 1 antigen; epididymal secretory protein E5; CD52 antigen (CAMPATH-1 antigen); CDW52 antigen (CAMPATH-1 antigen); human epididymis-specific protein 5; CDW52;

**Gene ID** 1043

**mRNA Refseq** NM\_001803

**Protein Refseq** NP\_001794

**MIM** 114280

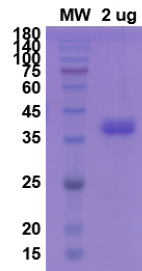
**UniProt ID** P31358

 Tel: 1-631-559-9269 1-516-512-3133

 Email: [info@creative-biomart.com](mailto:info@creative-biomart.com)  Fax: 1-631-938-8127

 45-1 Ramsey Road, Shirley, NY 11967, USA

**SDS-PAGE**



 Tel: 1-631-559-9269 1-516-512-3133

 Email: [info@creative-biomart.com](mailto:info@creative-biomart.com)  Fax: 1-631-938-8127

 45-1 Ramsey Road, Shirley, NY 11967, USA