

## Recombinant Human CD52 protein, Fc-tagged

Cat. No. CD52-393H Lot. No. (See product label)

### SPECIFICATION

<b>Product Overview</b>	Recombinant Human CD52 (Gly25-Ser36) protein was fused to human IgG1 Fc tag at C-terminus and expressed in human 293 cells (HEK293).
<b>Species</b>	Human
<b>Source</b>	HEK293
<b>Protein Length</b>	Gly25-Ser36
<b>Description</b>	CAMPATH-1 antigen, also known as cluster of differentiation 52 (CD52), is a glycoprotein that in humans is encoded by the CD52 gene. It is widely expressed on the cell surface of immune cells, such as mature lymphocytes, natural killer cells (NK), eosinophils, neutrophils, monocytes/macrophages, and dendritic cells (DCs). Ligation of cell surface CD52 molecules may offer costimulatory signals for T-cell activation and proliferation.
<b>Predicted N Terminal</b>	Gly25
<b>Form</b>	Lyophilized from 0.22 µm filtered solution in Tris with Glycine, Arginine and NaCl, pH7.5, 10% trehalose.
<b>Molecular Mass</b>	The protein has a calculated MW of 27.9 kDa. The protein migrates as 38-43 kDa under reducing (R) condition (SDS-PAGE) due to glycosylation.
<b>Endotoxin</b>	Less than 1.0 EU per µg by the LAL method.

 Tel: 1-631-559-9269 1-516-512-3133


 Email: [info@creative-biomart.com](mailto:info@creative-biomart.com)  Fax: 1-631-938-8127

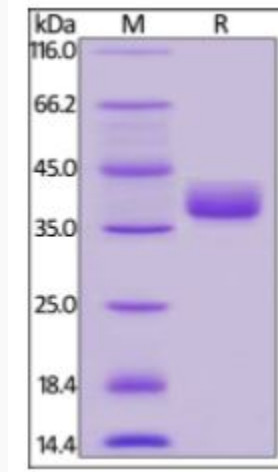
 45-1 Ramsey Road, Shirley, NY 11967, USA

<b>Purity</b>	>95% as determined by SDS-PAGE.
<b>Storage</b>	<p>For long term storage, the product should be stored at lyophilized state at -20 centigrade or lower.</p> <p>Please avoid repeated freeze-thaw cycles.</p> <p>This product is stable after storage at:</p> <p>-20 to -70 centigrade for 12 months in lyophilized state;</p> <p>-70 centigrade for 3 months under sterile conditions after reconstitution.</p>
<b>Reconstitution</b>	It is recommended that sterile water be added to the vial to prepare a stock solution of 0.2 ug/ul. Centrifuge the vial at 4°C before opening to recover the entire contents.
<b>GENE INFORMATION</b>	
<b>Gene Name</b>	CD52
<b>Official Symbol</b>	CD52
<b>Synonyms</b>	CD52; CD52 molecule; CD52 antigen (CAMPATH 1 antigen) , CDW52; CAMPATH-1 antigen; he5; cambridge pathology 1 antigen; epididymal secretory protein E5; CD52 antigen (CAMPATH-1 antigen); CDW52 antigen (CAMPATH-1 antigen); human epididymis-specific protein 5; CDW52
<b>Gene ID</b>	1043
<b>mRNA Refseq</b>	NM_001803
<b>Protein Refseq</b>	NP_001794
<b>MIM</b>	114280

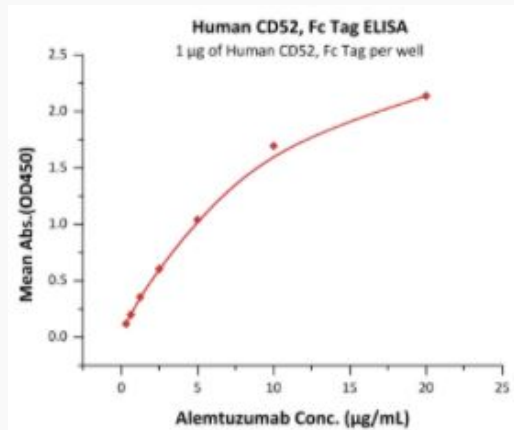
 Tel: 1-631-559-9269 1-516-512-3133

 Email: [info@creative-biomart.com](mailto:info@creative-biomart.com)  Fax: 1-631-938-8127

 45-1 Ramsey Road, Shirley, NY 11967, USA

**UniProt ID**
**P31358**
**SDS-PAGE of CD52-393H**


Human CD52, Fc Tag on SDS-PAGE under reducing (R) condition. The gel was stained overnight with Coomassie Blue. The purity of the protein is greater than 95%.

**Bioactivity-ELISA of CD52-393H**


Immobilized Human CD52, Fc Tag at 10 µg/mL (100 µL/well) can bind


Tel: 1-631-559-9269 1-516-512-3133

Email: [info@creative-biomart.com](mailto:info@creative-biomart.com) Fax: 1-631-938-8127


45-1 Ramsey Road, Shirley, NY 11967, USA



Alemtuzumab with a linear range of 0.313-10 µg/mL (QC tested).

 Tel: 1-631-559-9269 1-516-512-3133

 Email: [info@creative-biomart.com](mailto:info@creative-biomart.com)  Fax: 1-631-938-8127

 45-1 Ramsey Road, Shirley, NY 11967, USA