

## Recombinant Human CD52 protein, mFc-tagged

**Cat. No.** CD52-6875H    **Lot. No.** (See product label)

### SPECIFICATION

|                         |  |
|-------------------------|--|
| <b>Product Overview</b> | Recombinant Human CD52 protein(P31358)(Gly25-Ser36), fused with C-terminal mFc tag, was expressed in HEK293.                             |
| <b>Species</b>          | Human  |
| <b>Source</b>           | HEK293   |
| <b>ProteinLength</b>    | Gly25-Ser36  |
| <b>Tag</b>              | C-mFc  |
| <b>Form</b>             | Lyophilized from 0.22µm filtered solution in PBS (pH 7.4). Normally 5% trehalose is added as protectant before lyophilization.           |
| <b>Molecular Mass</b>   | The protein has a predicted MW of 27.6 kDa. Due to glycosylation, the protein migrates to 38-48 kDa based on Tris-Bis PAGE result.       |
| <b>Endotoxin</b>        | Less than 1EU per µg by the LAL method.  |
| <b>Purity</b>           | > 95% as determined by Tris-Bis PAGE; > 95% as determined by HPLC  |
| <b>Storage</b>          | Reconstituted protein stable at -80°C for 12 months, 4°C for 1 week. Use a manual defrost freezer and avoid repeated freeze-thaw cycles. |
| <b>Reconstitution</b>   | Centrifuge tubes before opening. Reconstituting to a concentration more than 100   |

 Tel: 1-631-559-9269    1-516-512-3133

 Email: [info@creative-biomart.com](mailto:info@creative-biomart.com)     Fax: 1-631-938-8127

 45-1 Ramsey Road, Shirley, NY 11967, USA

µg/ml is recommended. Dissolve the lyophilized protein in distilled water.

## GENE INFORMATION

**Gene Name** CD52 CD52 molecule [ Homo sapiens ]

**Official Symbol** CD52

**Synonyms** CD52; CD52 molecule; CD52 antigen (CAMPATH 1 antigen) , CDW52; CAMPATH-1 antigen; he5; cambridge pathology 1 antigen; epididymal secretory protein E5; CD52 antigen (CAMPATH-1 antigen); CDW52 antigen (CAMPATH-1 antigen); human epididymis-specific protein 5; CDW52;

**Gene ID** 1043

**mRNA Refseq** NM\_001803

**Protein Refseq** NP\_001794

**MIM** 114280

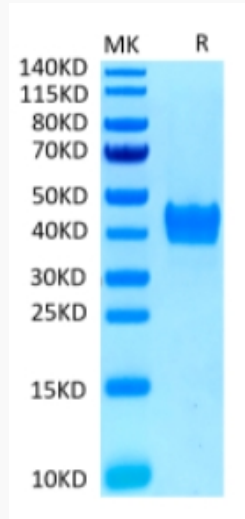
**UniProt ID** P31358

 Tel: 1-631-559-9269 1-516-512-3133

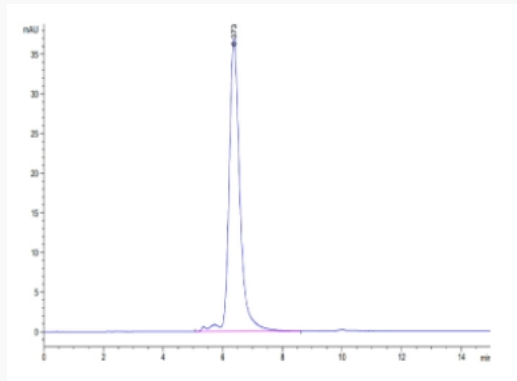
 Email: [info@creative-biomart.com](mailto:info@creative-biomart.com)  Fax: 1-631-938-8127

 45-1 Ramsey Road, Shirley, NY 11967, USA

**Tris-Bis PAGE**



**SEC-HPLC**



 Tel: 1-631-559-9269 1-516-512-3133

 Email: [info@creative-biomart.com](mailto:info@creative-biomart.com)  Fax: 1-631-938-8127

 45-1 Ramsey Road, Shirley, NY 11967, USA