

Recombinant Human CD58 Protein, His-tagged

Cat. No. CD58-201H Lot. No. (See product label)

SPECIFICATION

Product Overview	Recombinant Human CD58 Protein with His tag was expressed in E. coli.
Species	Human
Source	E.coli
Description	CD2 (also designated E-rosette receptor) interacts through its amino-terminal domain with the extracellular domain of CD58 (also designated CD2 ligand) to mediate cell adhesion. CD2/CD58 binding can enhance antigen-specific T cell activation. CD2 is a transmembrane glycoprotein that is expressed on T lymphocytes, NK cells and thymocytes, as well as on mouse B cells and rat splenic macrophages. CD58 is a heavily glycosylated protein with a broad tissue distribution in hematopoietic and other cells, including endothelium.
Molecular Mass	~24 kDa
AA Sequence	FSQQIYGVVYGNVTFHVPSNVPLKEVLWKKQKDKVAELENSEFRASFSSFKNRVYLD TVSGSLTIYNLTSSDEDEYEMESPNITDTMKFFLYVLESLPSPTLTCALTNGSIEVQC MIPEHYNSHRGLIMYSWDCPMEQCKRNSTSIYFKMENDLPQKIQCTLSNPLFNTSS IILTTCIPSSGHSRHR
Purity	Transferred into competent cells and the supernatant was purified by NI column affinity chromatography and the purity is > 85% (by SDS-PAGE).
Notes	For research use only, not for use in diagnostic procedure.

 Tel: 1-631-559-9269 1-516-512-3133

 Email: info@creative-biomart.com  Fax: 1-631-938-8127

 45-1 Ramsey Road, Shirley, NY 11967, USA

Storage	Store at 4 centigrade short term. Aliquot and store at -20 centigrade long term. Avoid freeze-thaw cycles.
Concentration	≥0.5 mg/mL
Storage Buffer	PBS, 4M Urea, pH7.4

GENE INFORMATION

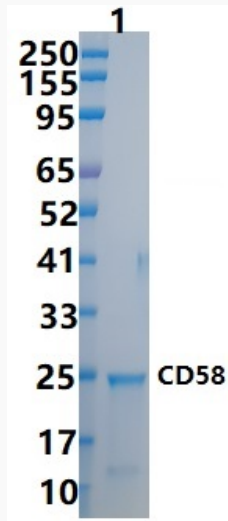
Gene Name	CD58 CD58 molecule [Homo sapiens (human)]
Official Symbol	CD58
Synonyms	CD58; CD58 molecule; CD58 antigen, (lymphocyte function associated antigen 3) , LFA3; lymphocyte function-associated antigen 3; surface glycoprotein LFA-3; CD58 antigen, (lymphocyte function-associated antigen 3); ag3; LFA3; LFA-3; FLJ23181; FLJ43722;
Gene ID	965
mRNA Refseq	NM_001144822
Protein Refseq	NP_001138294
MIM	153420
UniProt ID	P19256

 Tel: 1-631-559-9269 1-516-512-3133

 Email: info@creative-biomart.com  Fax: 1-631-938-8127

 45-1 Ramsey Road, Shirley, NY 11967, USA

SDS-PAGE



 Tel: 1-631-559-9269 1-516-512-3133

 Email: info@creative-biomart.com  Fax: 1-631-938-8127

 45-1 Ramsey Road, Shirley, NY 11967, USA