

## Recombinant Human CD58 protein, Fc-tagged

Cat. No. CD58-348H Lot. No. (See product label)

### SPECIFICATION

<b>Product Overview</b>	Recombinant Human CD58 protein (Phe29-Arg215), fused to human IgG1 Fc tag at C-terminus, was expressed in human 293 cells (HEK293).
<b>Species</b>	Human
<b>Source</b>	HEK293
<b>ProteinLength</b>	187
<b>Description</b>	CD antigen CD58 is also known as Lymphocyte function-associated antigen 3 (LFA-3). CD58 is a cell adhesion molecule expressed on Antigen Presenting Cells (APC), particularly macrophages. CD58/LFA3 is ligand of the T-lymphocyte CD2 glycoprotein, which binds to CD2 (LFA-2) on T cells and is important in strengthening the adhesion between the T cells and Professional Antigen Presenting Cells. In addition, the LFA-3/CD2 interaction may prime response by both the CD2+ and LFA-3+ cells. Polymorphisms in the CD58 gene are associated with increased risk for multiple sclerosis.
<b>Form</b>	Lyophilized from 0.22 um filtered solution in Tris with Glycine, Arginine and NaCl, pH7.5, 10% trehalose.
<b>Molecular Mass</b>	The protein has a calculated MW of 48.1 kDa. As a result of different glycosylation, the protein migrates as 60-75 kDa under reducing (R) condition, and 125-150 kDa under non-reducing (NR) condition (SDS-PAGE).

 Tel: 1-631-559-9269 1-516-512-3133

 Email: [info@creative-biomart.com](mailto:info@creative-biomart.com)  Fax: 1-631-938-8127

 45-1 Ramsey Road, Shirley, NY 11967, USA

<b>Endotoxin</b>	Less than 1.0 EU per ug by the LAL method.
<b>Purity</b>	>95% as determined by SDS-PAGE.
<b>Storage</b>	<p>For long term storage, the product should be stored at lyophilized state at -20 centigrade or lower.</p> <p>Please avoid repeated freeze-thaw cycles.</p> <p>This product is stable after storage at:</p> <p>-20 centigrade to -70 centigrade for 12 months in lyophilized state;          -70 centigrade for 3 months under sterile conditions after reconstitution.</p>
<b>Reconstitution</b>	It is recommended that sterile water be added to the vial to prepare a stock solution of 0.2 ug/ul. Centrifuge the vial at 4°C before opening to recover the entire contents.

## GENE INFORMATION

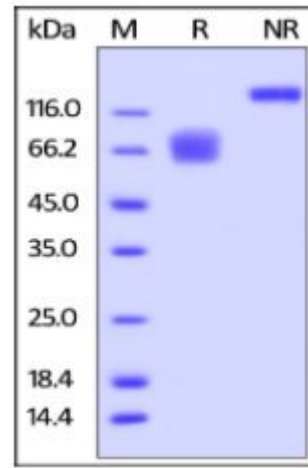
<b>Gene Name</b>	CD58
<b>Official Symbol</b>	CD58
<b>Synonyms</b>	ag3; LFA3; LFA-3
<b>Gene ID</b>	965
<b>mRNA Refseq</b>	NM_001779.3
<b>Protein Refseq</b>	NP_001770.1
<b>MIM</b>	153420
<b>UniProt ID</b>	Q9BRW0

 Tel: 1-631-559-9269 1-516-512-3133

 Email: [info@creative-biomart.com](mailto:info@creative-biomart.com)  Fax: 1-631-938-8127

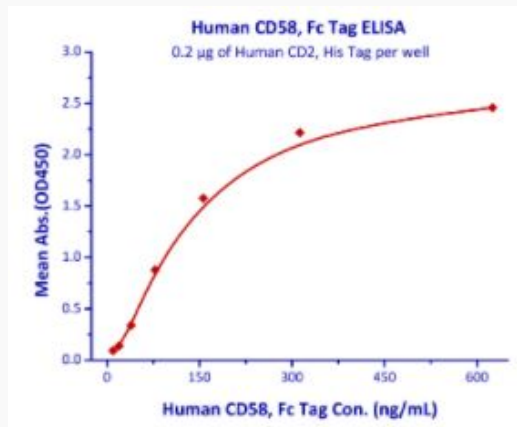
 45-1 Ramsey Road, Shirley, NY 11967, USA

**SDS-PAGE of CD58-348H**



Human CD58, Fc Tag on SDS-PAGE under reducing (R) and non-reducing (NR) conditions. The gel was stained overnight with Coomassie Blue. The purity of the protein is greater than 95%.

**Bioactivity-ELISA of CD58-348H**



Immobilized Human CD2, His Tag at 2 $\mu$ g/mL (100  $\mu$ L/well) can bind Human CD58, Fc Tag with a linear range of 10-156 ng/mL (QC tested).

Tel: 1-631-559-9269 1-516-512-3133

Email: [info@creative-biomart.com](mailto:info@creative-biomart.com) Fax: 1-631-938-8127

45-1 Ramsey Road, Shirley, NY 11967, USA