

Recombinant Rhesus monkey CD59 protein, His & S-tagged

Cat. No. CD59-6833R **Lot. No.** (See product label)

SPECIFICATION

Product Overview	Recombinant Rhesus monkey CD59 aa. (His21~Leu107 (Accession # Q8SQ46)) fused with N-terminal His & S tag was produced in E. coli cells.
Species	Rhesus macaque
Source	E.coli
ProteinLength	His21~Leu107
Form	Freeze-dried powder
Molecular Mass	20kDa as determined by SDS-PAGE reducing conditions.
Endotoxin	<1.0EU per 1ug (determined by the LAL method)
Purity	>95%
Characteristic	The isoelectric point is 5.8.
Applications	SDS-PAGE; WB; ELISA; IP.
Stability	The thermal stability is described by the loss rate of the target protein. The loss rate was determined by accelerated thermal degradation test, that is, incubate the protein at 37°C for 48h, and no obvious degradation and precipitation were observed. (Referring from China Biological Products Standard, which was calculated by the

 Tel: 1-631-559-9269 1-516-512-3133

 Email: info@creative-biomart.com  Fax: 1-631-938-8127

 45-1 Ramsey Road, Shirley, NY 11967, USA

Arrhenius equation.) The loss of this protein is less than 5% within the expiration date under appropriate storage condition.

Storage

Avoid repeated freeze/thaw cycles. Store at 2-8°C for one month. Aliquot and store at -80°C for 12 months.

Storage buffer

Supplied as lyophilized form in PBS, pH7.4, containing 5% trehalose, 0.01% sarcosyl.

Reconstitution

Reconstitute in sterile PBS, pH7.2-pH7.4.

GENE INFORMATION

Gene Name

CD59 CD59 molecule (CD59 blood group) [*Macaca mulatta* (Rhesus monkey)]

Official Symbol

CD59

Synonyms

CD59 glycoprotein preproprotein; Membrane attack complex inhibition factor; CD59 glycoprotein

Gene ID

693402

mRNA Refseq

NM_001261705.1

Protein Refseq

NP_001248634.1

UniProt ID

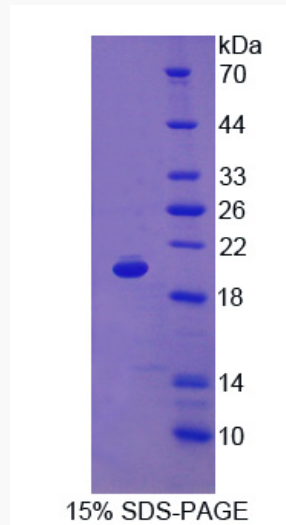
Q8SQ46

 Tel: 1-631-559-9269 1-516-512-3133

 Email: info@creative-biomart.com  Fax: 1-631-938-8127

 45-1 Ramsey Road, Shirley, NY 11967, USA

SDS-PAGE



 Tel: 1-631-559-9269 1-516-512-3133

 Email: info@creative-biomart.com  Fax: 1-631-938-8127

 45-1 Ramsey Road, Shirley, NY 11967, USA