

## Recombinant Human CD59 Protein, His and C-hFc-tagged

**Cat. No.** CD59-692H    **Lot. No.** (See product label)

### SPECIFICATION

<b>Product Overview</b>	Recombinant Human CD59 Protein (Leu26-Asn102) with His and C-hFc tag was expressed in 293F.
<b>Species</b>	Human
<b>Source</b>	HEK293
<b>ProteinLength</b>	Leu26-Asn102
<b>Description</b>	<p>This gene encodes a cell surface glycoprotein that regulates complement-mediated cell lysis, and it is involved in lymphocyte signal transduction. This protein is a potent inhibitor of the complement membrane attack complex, whereby it binds complement C8 and/or C9 during the assembly of this complex, thereby inhibiting the incorporation of multiple copies of C9 into the complex, which is necessary for osmolytic pore formation. This protein also plays a role in signal transduction pathways in the activation of T cells. Mutations in this gene cause CD59 deficiency, a disease resulting in hemolytic anemia and thrombosis, and which causes cerebral infarction. Multiple alternatively spliced transcript variants, which encode the same protein, have been identified for this gene.</p>
<b>Form</b>	Freeze-dried powder
<b>Molecular Mass</b>	Predicted Molecular Mass: 39.9 kDa; Accurate Molecular Mass: \
<b>Purity</b>	> 95%

 Tel: 1-631-559-9269    1-516-512-3133

 Email: [info@creative-biomart.com](mailto:info@creative-biomart.com)     Fax: 1-631-938-8127

 45-1 Ramsey Road, Shirley, NY 11967, USA

<b>Applications</b>	Positive Control; Immunogen; SDS-PAGE; WB.
<b>Stability</b>	The thermal stability is described by the loss rate. The loss rate was determined by accelerated thermal degradation test, that is, incubate the protein at 37 centigrade for 48h, and no obvious degradation and precipitation were observed. The loss rate is less than 5% within the expiration date under appropriate storage condition.
<b>Storage</b>	Avoid repeated freeze/thaw cycles. Store at 2-8 centigrade for one month. Aliquot and store at -80 centigrade for 12 months.
<b>Storage Buffer</b>	PBS, pH7.4, containing 0.01% SKL, 1mM DTT, 5% Trehalose and Proclin300.
<b>Reconstitution</b>	Reconstitute in 10mM PBS (pH7.4) to a concentration of 0.1-1.0 mg/mL. Do not vortex.

## GENE INFORMATION

<b>Gene Name</b>	CD59 CD59 molecule, complement regulatory protein [ Homo sapiens (human) ]
<b>Official Symbol</b>	CD59
<b>Synonyms</b>	CD59; CD59 molecule, complement regulatory protein; CD59 antigen p18 20 (antigen identified by monoclonal antibodies 16.3A5, EJ16, EJ30, EL32 and G344), CD59 antigen, complement regulatory protein, MIC11, MIN1, MIN2, MIN3, MSK21; CD59 glycoprotein; 16.3A5; EJ16; EJ30; EL32; G344; p18 20; protectin; 1F5 antigen; MEM43 antigen; Ly-6-like protein; T cell-activating protein; human leukocyte antigen MIC11; lymphocytic antigen CD59/MEM43; 20 kDa homologous restriction factor; membrane inhibitor of reactive lysis; membrane attack complex inhibition factor; membrane attack complex (MAC) inhibition factor; surface antigen recognized by monoclonal 16.3A5; CD59 antigen p18-20 (antigen identified by monoclonal antibodies 16.3A5, EJ16, EJ30, EL32 and G344); 1F5; MIN1; MIN2; MIN3; M1RL;

 Tel: 1-631-559-9269 1-516-512-3133

 Email: [info@creative-biomart.com](mailto:info@creative-biomart.com)  Fax: 1-631-938-8127

 45-1 Ramsey Road, Shirley, NY 11967, USA

HRF20; MACIF; MEM43; MIC11; MSK21; HRF-20; MAC-IP; p18-20; MGC2354;  
FLJ38134; FLJ92039;

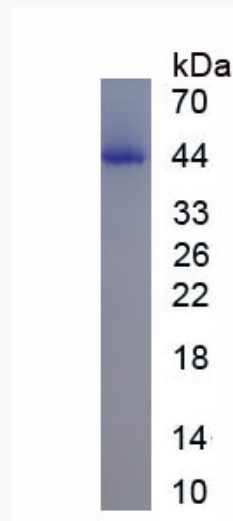
**Gene ID** 966

**mRNA Refseq** NM\_000611

**Protein Refseq** NP\_000602

**MIM** 107271

**UniProt ID** P13987



 Tel: 1-631-559-9269 1-516-512-3133

 Email: [info@creative-biomart.com](mailto:info@creative-biomart.com)  Fax: 1-631-938-8127

 45-1 Ramsey Road, Shirley, NY 11967, USA