

Recombinant Full Length Human CD5 molecule like Protein, His&Avi tagged

Cat. No. CD5L-05HFL Lot. No. (See product label)

SPECIFICATION

Product Overview	Recombinant human CD5L (CD5 Molecule Like) encompassing amino acids 20-347(end). This construct contains a C-terminal Avi-Tag followed by a C-terminal His-tag (6xHis). The recombinant protein was affinity purified.
Species	Human
Source	HEK293
ProteinLength	1-347aa
Description	Predicted to enable serine-type endopeptidase activity. Predicted to be involved in zymogen activation. Predicted to act upstream of or within positive regulation of complement-dependent cytotoxicity and regulation of complement activation. Located in cell surface.
Tag	C-Avi-His
Form	Aqueous buffer solution
Molecular Mass	39 kDa +glycans
Purity	≥ 90%
Notes	Avoid freeze/thaw cycles.

 Tel: 1-631-559-9269 1-516-512-3133

 Email: info@creative-biomart.com  Fax: 1-631-938-8127

 45-1 Ramsey Road, Shirley, NY 11967, USA

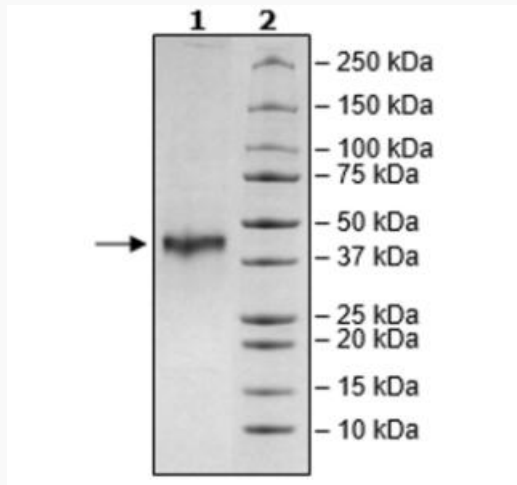
Stability	At least 6 months at -80 centigrade.
Storage	Store at -80 centigrade.
Concentration	0.41 mg/mL
GENE INFORMATION	
Gene Name	CD5L CD5 molecule like [Homo sapiens (human)]
Official Symbol	CD5L
Synonyms	CD5L; CD5 molecule-like; API6, apoptosis inhibitor 6 , CD5 antigen like (scavenger receptor cysteine rich family); CD5 antigen-like; Spalpha; CT-2; apoptosis inhibitor 6; igM-associated peptide; CD5 antigen-like (scavenger receptor cysteine rich family); AIM; API6; PRO229; SP-ALPHA;
Gene ID	922
mRNA Refseq	NM_005894
Protein Refseq	NP_005885
MIM	602592
UniProt ID	O43866

 Tel: 1-631-559-9269 1-516-512-3133

 Email: info@creative-biomart.com  Fax: 1-631-938-8127

 45-1 Ramsey Road, Shirley, NY 11967, USA

WB



 Tel: 1-631-559-9269 1-516-512-3133

 Email: info@creative-biomart.com  Fax: 1-631-938-8127

 45-1 Ramsey Road, Shirley, NY 11967, USA