

Recombinant Human CD5L Protein, GST-Tagged

Cat. No. CD5L-0837H **Lot. No.** (See product label)

SPECIFICATION

Product Overview	Human CD5L full-length ORF (NP_005885.1, 1 a.a. - 347 a.a.) recombinant protein with GST-tag at N-terminal.
Species	Human
Source	Wheat Germ
Description	CD5L (CD5 Molecule Like) is a Protein Coding gene. GO annotations related to this gene include scavenger receptor activity. An important paralog of this gene is DMBT1.
Molecular Mass	64.5 kDa
AA Sequence	MALLFSLILAICTRPGFLASPSGVRLVGGLHRCEGRVEVEQKGQWGTVCDDGWDIK DVAVLCRELGCGAASGTPSGILYEPPEAEKEQKVLIQSVSCTGTEDTLAQCEQEEVYD CSHDEDAGASCENPESSFSPVPEGVRLADGPGHCKGRVEVKHQNQWYTVQCQTG WSLRAAKVVCRQLGCGRAVLTQKRCNKHAYGRKPIWLSQMSCSGREATLQDCPS GPWGKNTCNHDEDTWVECEDPFDLRLVGGDNLCGRLEVLHKGVWGSVCDDNW GEKEDQVVCKQLGCGKSLSPSFRDRKCYGPGVGRIWLDNVRCSGEEQSLEQCQH RFWGFHDCTHQEDVAVICSG
Applications	Enzyme-linked Immunoabsorbent Assay Western Blot (Recombinant protein) Antibody Production Protein Array

 Tel: 1-631-559-9269 1-516-512-3133

 Email: info@creative-biomart.com  Fax: 1-631-938-8127

 45-1 Ramsey Road, Shirley, NY 11967, USA

Storage Store at -80 centigrade. Aliquot to avoid repeated freezing and thawing.

Storage Buffer 50 mM Tris-HCl, 10 mM reduced Glutathione, pH=8.0 in the elution buffer.

GENE INFORMATION

Gene Name CD5L CD5 molecule-like [Homo sapiens]

Official Symbol CD5L

Synonyms CD5L; CD5 molecule-like; API6, apoptosis inhibitor 6, CD5 antigen like (scavenger receptor cysteine rich family); CD5 antigen-like; Spalpha; CT-2; apoptosis inhibitor 6; igM-associated peptide; CD5 antigen-like (scavenger receptor cysteine rich family); AIM; API6; PRO229; SP-ALPHA;

Gene ID 922

mRNA Refseq NM_005894

Protein Refseq NP_005885

MIM 602592

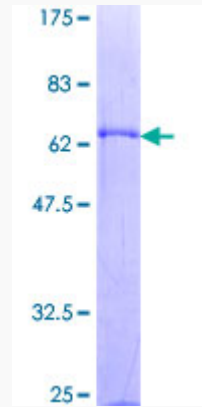
UniProt ID O43866

 Tel: 1-631-559-9269 1-516-512-3133

 Email: info@creative-biomart.com  Fax: 1-631-938-8127

 45-1 Ramsey Road, Shirley, NY 11967, USA

**Quality Control
Testing**



12.5% SDS-PAGE Stained with Coomassie Blue.

 Tel: 1-631-559-9269 1-516-512-3133

 Email: info@creative-biomart.com  Fax: 1-631-938-8127

 45-1 Ramsey Road, Shirley, NY 11967, USA