

Recombinant Human CD6 Protein, GST-Tagged

Cat. No. CD6-0839H **Lot. No.** (See product label)

SPECIFICATION

Product Overview	Human CD6 partial ORF (NP_006716, 308 a.a. - 400 a.a.) recombinant protein with GST-tag at N-terminal.
Species	Human
Source	Wheat Germ
Description	<p>This gene encodes a protein found on the outer membrane of T-lymphocytes as well as some other immune cells. The encoded protein contains three scavenger receptor cysteine-rich (SRCR) domains and a binding site for an activated leukocyte cell adhesion molecule. The gene product is important for continuation of T cell activation. This gene may be associated with susceptibility to multiple sclerosis (PMID: 19525953, 21849685). Multiple transcript variants encoding different isoforms have been found for this gene. [provided by RefSeq, Dec 2011]</p>
Molecular Mass	35.97 kDa
AA Sequence	CGTAVERPKGLPHLSLGRMYYSNGEELTSLNCSWRFNNSNLCSQSLAARVLCSA SRSLHNLSTPEVPASVQTVTISSVTVKIENKESRELM
Applications	<p>Enzyme-linked Immunoabsorbent Assay Western Blot (Recombinant protein) Antibody Production Protein Array</p>

 Tel: 1-631-559-9269 1-516-512-3133

 Email: info@creative-biomart.com  Fax: 1-631-938-8127

 45-1 Ramsey Road, Shirley, NY 11967, USA

Storage Store at -80 centigrade. Aliquot to avoid repeated freezing and thawing.

Storage Buffer 50 mM Tris-HCl, 10 mM reduced Glutathione, pH=8.0 in the elution buffer.

GENE INFORMATION

Gene Name CD6 CD6 molecule [Homo sapiens]

Official Symbol CD6

Synonyms CD6; CD6 molecule; CD6 antigen; T-cell differentiation antigen CD6; Tp120; T12; TP120; FLJ44171;

Gene ID 923

mRNA Refseq NM_001254750

Protein Refseq NP_001241679

MIM 186720

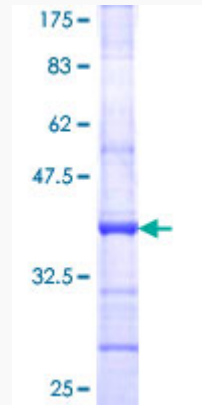
UniProt ID P30203

 Tel: 1-631-559-9269 1-516-512-3133

 Email: info@creative-biomart.com  Fax: 1-631-938-8127

 45-1 Ramsey Road, Shirley, NY 11967, USA

**Quality Control
Testing**



12.5% SDS-PAGE Stained with Coomassie Blue.

 Tel: 1-631-559-9269 1-516-512-3133

 Email: info@creative-biomart.com  Fax: 1-631-938-8127

 45-1 Ramsey Road, Shirley, NY 11967, USA