

Recombinant Human CD6 protein, His-tagged

Cat. No. CD6-1650H Lot. No. (See product label)

SPECIFICATION

Product Overview	Recombinant Human CD6 protein(NP_006716.3)(His18-Leu402), fused with C-terminal His tag, was expressed in HEK293.
Species	Human
Source	C-His
ProteinLength	His18-Leu402
Tag	C-His
Form	Lyophilized from 0.22µm filtered solution in PBS (pH 7.4). Normally 8% trehalose is added as protectant before lyophilization.
Bio-activity	Immobilized Human CD6, His Tag at 1µg/ml (100µl/well) on the plate. Dose response curve for Human ALCAM, hFc Tag with the EC50 of 5.6ng/ml determined by ELISA.
Molecular Mass	The protein has a predicted MW of 42.14 kDa. Due to glycosylation, the protein migrates to 70-90 kDa based on Tris-Bis PAGE result.
Endotoxin	Less than 1EU per µg by the LAL method.
Purity	> 95% as determined by Tris-Bis PAGE; > 95% as determined by HPLC.
Storage	Reconstituted protein stable at -80°C for 12 months, 4°C for 1 week. Use a manual

 Tel: 1-631-559-9269 1-516-512-3133

 Email: info@creative-biomart.com  Fax: 1-631-938-8127

 45-1 Ramsey Road, Shirley, NY 11967, USA

defrost freezer and avoid repeated freeze-thaw cycles.

Reconstitution

Centrifuge tubes before opening. Reconstituting to a concentration more than 100 µg/ml is recommended. Dissolve the lyophilized protein in distilled water.

GENE INFORMATION

Gene Name [CD6 CD6 molecule \[Homo sapiens \]](#)

Official Symbol [CD6](#)

Synonyms CD6; CD6 molecule; CD6 antigen; T-cell differentiation antigen CD6; Tp120; T12; TP120; FLJ44171;

Gene ID [923](#)

mRNA Refseq [NM_001254750](#)

Protein Refseq [NP_001241679](#)

MIM [186720](#)

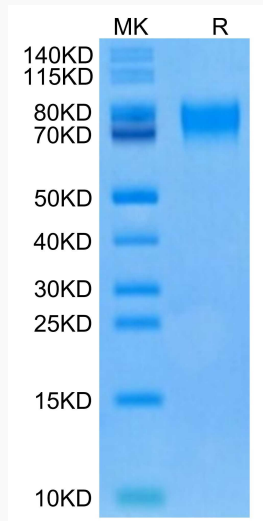
UniProt ID [P30203](#)

 Tel: 1-631-559-9269 1-516-512-3133

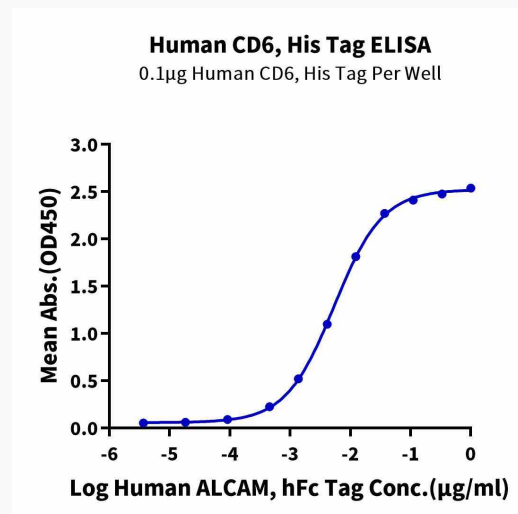
 Email: info@creative-biomart.com  Fax: 1-631-938-8127

 45-1 Ramsey Road, Shirley, NY 11967, USA

Tris-Bis PAGE



ELISA



Tel: 1-631-559-9269 1-516-512-3133

Email: info@creative-biomart.com Fax: 1-631-938-8127

45-1 Ramsey Road, Shirley, NY 11967, USA