

Recombinant Human CD6 protein, His-tagged

Cat. No. CD6-4662H Lot. No. (See product label)

SPECIFICATION

Product Overview	Recombinant Human CD6 protein(P30203)(18-398 aa), fused with N-terminal His tag, was expressed in Yeast.
Species	Human
Source	Yeast
ProteinLength	18-398 aa
Form	For liquid formulations, the standard storage buffer consists of a Tris or PBS based solution supplemented with 5-50% glycerol. When provided as lyophilized powder, the product undergoes freeze-drying from a Tris- or PBS-based formulation containing 6% trehalose, adjusted to pH 8.0 prior to the lyophilization process.
Molecular Mass	42.6 kDa
AASequence	<p>HPSPAPPDQLNTSSAESELWEPGERLPVRLTNGSSSSCSGTVEVRLEASWEPACGA LWDSRAAEAVCRALGCGGAEAAASQLAPPTPELPPPPAAGNTSVAANATLAGAPALL CSGAEWRLCEVVEHACRSDGRRARVTCAENRALRLVDGGGACAGRVEMLEHGEW GSVCDTWDLEDAHVVCRQLGCGWAVQALPGLHFTPGRGPIHRDQVNCSGAEAY LWDCPGLPGQHHCYCGHKEDAGAVCSEHQSWRLTGGADRCEGQVEVHFRGVWNTV CDSEWYPSEAKVLCQSLGCGTAVERP KGLPHSLSGRMYYSCNGEELTSLNCSWRF NNSNLCSQSLAARVLCASRSLHNLSTPEVPASVQTVTIESSVTVKIENKESRE</p>
Purity	Greater than 95% as determined by SDS-PAGE.

 Tel: 1-631-559-9269 1-516-512-3133

 Email: info@creative-biomart.com  Fax: 1-631-938-8127

 45-1 Ramsey Road, Shirley, NY 11967, USA

Storage Store at -20°C/-80°C upon receipt, aliquoting is necessary for mutiple use. Avoid repeated freeze-thaw cycles.

Reconstitution Please reconstitute protein indeionized sterile water to a concentration of 0.1-1.0 mg/mL. Aliquot for long-term storage at -80°C.

GENE INFORMATION

Gene Name CD6 CD6 molecule [Homo sapiens]

Official Symbol CD6

Synonyms CD6; CD6 molecule; CD6 antigen; T-cell differentiation antigen CD6; Tp120; T12; TP120; FLJ44171;

Gene ID 923

mRNA Refseq NM_001254750

Protein Refseq NP_001241679

MIM 186720

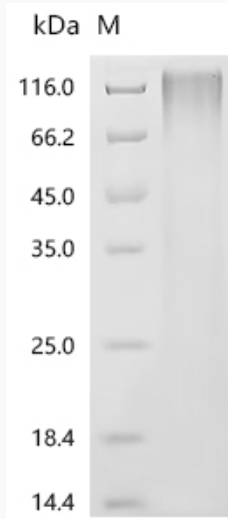
UniProt ID P30203

 Tel: 1-631-559-9269 1-516-512-3133

 Email: info@creative-biomart.com  Fax: 1-631-938-8127

 45-1 Ramsey Road, Shirley, NY 11967, USA

SDS-PAGE



 Tel: 1-631-559-9269 1-516-512-3133

 Email: info@creative-biomart.com  Fax: 1-631-938-8127

 45-1 Ramsey Road, Shirley, NY 11967, USA