

Recombinant Human CD63 Full Length Transmembrane protein, His-tagged

Cat. No. CD63-4837H **Lot. No.** (See product label)

SPECIFICATION

Product Overview	Recombinant Human CD63 protein(P08962)(2-238aa), fused with N-terminal His tag, was expressed in in vitro E. coli expression system.
Species	Human
Source	E.coli
ProteinLength	2-238aa
Form	If the delivery form is liquid, the default storage buffer is Tris/PBS-based buffer, 5%-50% glycerol. If the delivery form is lyophilized powder, the buffer before lyophilization is Tris/PBS-based buffer, 6% Trehalose, pH 8.0.
Molecular Mass	31.5 kDa
AA Sequence	AVEGGMKCVKFLLYVLLLAFCACAVGLIAVGVGAQLVLSQTIIQGATPGSLLPVVIIIV GVFLFLVAFVGGCGACKENYCLMITFAIFLSLIMLVEVAAAIAGYVFRDKVMSEFNNN FRQQMENYPKNNHTASILDRMQADFKCCGAANYTDWEKIPSMKSNRVPDSCCINVT VGCGINFNEKAIHKEGCVEKIGGWLRKNVLLVAAAALGIAFVEVLGIVFACCLVKSIRS GYEVM
Purity	Greater than 90% as determined by SDS-PAGE.

 Tel: 1-631-559-9269 1-516-512-3133

 Email: info@creative-biomart.com  Fax: 1-631-938-8127

 45-1 Ramsey Road, Shirley, NY 11967, USA

Storage Store at -20°C/-80°C upon receipt, aliquoting is necessary for mutiple use. Avoid repeated freeze-thaw cycles.

Reconstitution Please reconstitute protein in deionized sterile water to a concentration of 0.1-1.0 mg/mL. We recommend to add 5-50% of glycerol (final concentration) and aliquot for long-term storage at -20°C/-80°C.

GENE INFORMATION

Gene Name CD63 CD63 molecule [Homo sapiens]

Official Symbol CD63

Synonyms CD63; CD63 molecule; CD63 antigen (melanoma 1 antigen) , MLA1; CD63 antigen; ME491; TSPAN30; tspan-30; granulophysin; tetraspanin-30; melanoma-associated antigen MLA1; CD63 antigen (melanoma 1 antigen); melanoma-associated antigen ME491; ocular melanoma-associated antigen; lysosomal-associated membrane protein 3; lysosome-associated membrane glycoprotein 3; MLA1; LAMP-3; OMA81H;

Gene ID 967

mRNA Refseq NM_001257389

Protein Refseq NP_001244318

MIM 155740

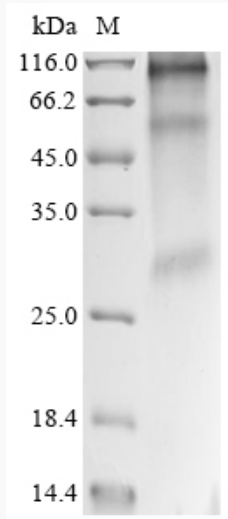
UniProt ID P08962

 Tel: 1-631-559-9269 1-516-512-3133

 Email: info@creative-biomart.com  Fax: 1-631-938-8127

 45-1 Ramsey Road, Shirley, NY 11967, USA

SDS-PAGE



 Tel: 1-631-559-9269 1-516-512-3133

 Email: info@creative-biomart.com  Fax: 1-631-938-8127

 45-1 Ramsey Road, Shirley, NY 11967, USA