

Recombinant Human CD68 Protein, C-His-tagged

Cat. No. CD68-204H Lot. No. (See product label)

SPECIFICATION

Product Overview	Recombinant Human CD68 Protein with C-His tag was expressed in E. coli.
Species	Human
Source	E.coli
Description	CD68 (macrosialin) is a heavily glycosylated transmembrane protein that is expressed by and commonly used as a marker for monocytes and macrophages. It is found on the plasma membrane, as well as endosomal and lysosomal membranes. It is proposed to bind OxLDL and has been observed as a homodimer.
Molecular Mass	~33 kDa
AA Sequence	NDCPHKKSATLLPSFTVTPTVTESTGTTSHRTTKSHKTTTHRTTTTGTTSHGPTTAT HNPTTTSHGNTVHPTSSTATSQGPSTATHSPATTSHGNATVHPTSSTATSPGF TSSAHPEPPPPSPSPSPTSKETIGDYWTNGSQPCVHLQAQIQIRVMYTTQGGGEA WGISVLNPNKTKVQGSCEGAHPHLLLSFPYGHLSFGFMQDLQKQVVYLSYMAVEYN VSFPHAAQWTFSAQNASLRDLQAPLGQSFSCSNSSIILSPAVHLDLLSLRLQAAQLP HTGVFGQSFSCPSDRS
Purity	Transferred into competent cells and the supernatant was purified by NI column affinity chromatography and the purity is > 85% (by SDS-PAGE).
Notes	For research use only, not for use in diagnostic procedure.

 Tel: 1-631-559-9269 1-516-512-3133

 Email: info@creative-biomart.com  Fax: 1-631-938-8127

 45-1 Ramsey Road, Shirley, NY 11967, USA

Storage	Store at 4 centigrade short term. Aliquot and store at -20 centigrade long term. Avoid freeze-thaw cycles.
Concentration	≥0.5 mg/mL
Storage Buffer	PBS, 4M Urea, pH7.4

GENE INFORMATION

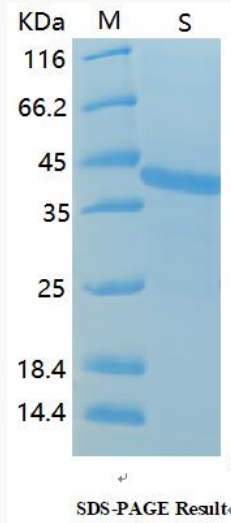
Gene Name	CD68 CD68 molecule [Homo sapiens (human)]
Official Symbol	CD68
Synonyms	CD68; CD68 molecule; CD68 antigen; macrosialin; DKFZp686M18236; GP110; LAMP4; macrophage antigen CD68; SCARD1; scavenger receptor class D; member 1; scavenger receptor class D, member 1;
Gene ID	968
mRNA Refseq	NM_001040059
Protein Refseq	NP_001035148
MIM	153634
UniProt ID	P34810

 Tel: 1-631-559-9269 1-516-512-3133

 Email: info@creative-biomart.com  Fax: 1-631-938-8127

 45-1 Ramsey Road, Shirley, NY 11967, USA

SDS-PAGE



 Tel: 1-631-559-9269 1-516-512-3133

 Email: info@creative-biomart.com  Fax: 1-631-938-8127

 45-1 Ramsey Road, Shirley, NY 11967, USA