

Recombinant Human CD69 Protein, GST-Tagged

Cat. No. CD69-0844H **Lot. No.** (See product label)

SPECIFICATION

Product Overview	Human CD69 full-length ORF (NP_001772.1, 1 a.a. - 199 a.a.) recombinant protein with GST-tag at N-terminal.
Species	Human
Source	Wheat Germ
Description	This gene encodes a member of the calcium dependent lectin superfamily of type II transmembrane receptors. Expression of the encoded protein is induced upon activation of T lymphocytes, and may play a role in proliferation. Furthermore, the protein may act to transmit signals in natural killer cells and platelets. [provided by RefSeq, Aug 2011]
Molecular Mass	49 kDa
AA Sequence	MSENCFVAENSSLHPESGQENDATSPHFSTRHEGSFQVPVLCVAMNVVFITILIALI ALSVGQYNCPGQYTFSMPSDSHVSSCEDWVG YQRKCYFISTVKRSWTS AQNACS EHGATLAVIDSEKDMNFLKRYAGREEHWVGLKKEPGHPWKWSNGKEFNNWFNVT GSDKCVFLKNT EVSSMECEKNLYWICKPKPYK
Applications	Enzyme-linked Immunoabsorbent Assay Western Blot (Recombinant protein) Antibody Production Protein Array

 Tel: 1-631-559-9269 1-516-512-3133

 Email: info@creative-biomart.com  Fax: 1-631-938-8127

 45-1 Ramsey Road, Shirley, NY 11967, USA

Storage Store at -80 centigrade. Aliquot to avoid repeated freezing and thawing.

Storage Buffer 50 mM Tris-HCl, 10 mM reduced Glutathione, pH=8.0 in the elution buffer.

GENE INFORMATION

Gene Name CD69 CD69 molecule [Homo sapiens]

Official Symbol CD69

Synonyms

CD69; CD69 molecule; CD69 antigen (p60, early T cell activation antigen); early activation antigen CD69; CLEC2C; leukocyte surface antigen Leu-23; early T-cell activation antigen p60; early lymphocyte activation antigen; activation inducer molecule (AIM/CD69); C-type lectin domain family 2, member C; CD69 antigen (p60, early T-cell activation antigen); AIM; EA1; MLR-3; GP32/28; BL-AC/P26;

Gene ID 969

mRNA Refseq NM_001781

Protein Refseq NP_001772

MIM 107273

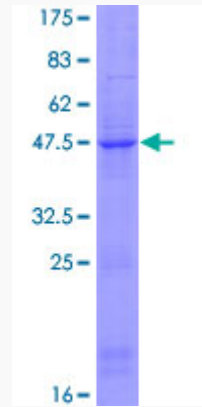
UniProt ID Q07108

 Tel: 1-631-559-9269 1-516-512-3133

 Email: info@creative-biomart.com  Fax: 1-631-938-8127

 45-1 Ramsey Road, Shirley, NY 11967, USA

**Quality Control
Testing**



12.5% SDS-PAGE Stained with Coomassie Blue.

 Tel: 1-631-559-9269 1-516-512-3133

 Email: info@creative-biomart.com  Fax: 1-631-938-8127

 45-1 Ramsey Road, Shirley, NY 11967, USA