

## Recombinant Human CD69 Protein, C-His-tagged

**Cat. No.** CD69-205H    **Lot. No.** (See product label)

### SPECIFICATION

<b>Product Overview</b>	Recombinant Human CD69 Protein with C-His tag was expressed in E. coli.
<b>Species</b>	Human
<b>Source</b>	E.coli
<b>Description</b>	<p>CD69, also known as Leu-23, is a type II transmembrane glycoprotein that is expressed on the surface of T cells, B cells, and NK cells. This phosphorylated disulfide-linked 28 to 32-kDa homodimer is constitutively expressed on a subset of thymocytes and platelets. It also acts as an activation antigen of lymphocytes, NK cells, neutrophils, and eosinophils. Studies have shown that stimulation of the T cell receptor (TCR) increases the expression of CD69 on the cell surface. The ability to detect the level of CD69 expression after TCR activation makes CD69 an ideal indicator of T cell activation. The FN50 antibody is widely used as a marker for T cell activation.</p>
<b>Molecular Mass</b>	~15 kDa
<b>AA Sequence</b>	<p>SVGQYNCPGQYTFSMPSDSHVSSCEDWVG YQRKCYFISTVKRSWTS AQNACSE  HGATLAVIDSEKDMNFLKRYAGREEHWVGLKKEPGHPWKWSNGKEFNNWFNV TG  SDKCVFLKNTEVSSMECEKNLYWICNKPYK</p>
<b>Purity</b>	Transferred into competent cells and the supernatant was purified by NI column affinity chromatography and the purity is > 85% (by SDS-PAGE).

 Tel: 1-631-559-9269    1-516-512-3133

 Email: [info@creative-biomart.com](mailto:info@creative-biomart.com)     Fax: 1-631-938-8127

 45-1 Ramsey Road, Shirley, NY 11967, USA

<b>Notes</b>	For research use only, not for use in diagnostic procedure.
<b>Storage</b>	Store at 4 centigrade short term. Aliquot and store at -20 centigrade long term. Avoid freeze-thaw cycles.
<b>Concentration</b>	≥0.5 mg/mL
<b>Storage Buffer</b>	PBS, 4M Urea, pH7.4

## GENE INFORMATION

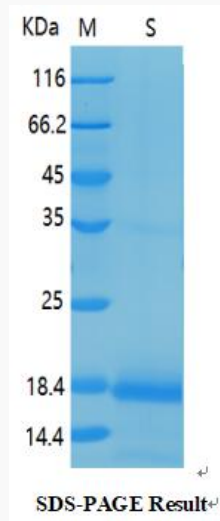
<b>Gene Name</b>	CD69 CD69 molecule [ Homo sapiens (human) ]
<b>Official Symbol</b>	CD69
<b>Synonyms</b>	CD69; CD69 molecule; CD69 antigen (p60, early T cell activation antigen); early activation antigen CD69; CLEC2C; leukocyte surface antigen Leu-23; early T-cell activation antigen p60; early lymphocyte activation antigen; activation inducer molecule (AIM/CD69); C-type lectin domain family 2, member C; CD69 antigen (p60, early T-cell activation antigen); AIM; EA1; MLR-3; GP32/28; BL-AC/P26;
<b>Gene ID</b>	969
<b>mRNA Refseq</b>	NM_001781
<b>Protein Refseq</b>	NP_001772
<b>MIM</b>	107273
<b>UniProt ID</b>	Q07108

 Tel: 1-631-559-9269 1-516-512-3133

 Email: [info@creative-biomart.com](mailto:info@creative-biomart.com)  Fax: 1-631-938-8127

 45-1 Ramsey Road, Shirley, NY 11967, USA

**SDS-PAGE**



 Tel: 1-631-559-9269 1-516-512-3133

 Email: [info@creative-biomart.com](mailto:info@creative-biomart.com)  Fax: 1-631-938-8127

 45-1 Ramsey Road, Shirley, NY 11967, USA