

Recombinant Human CD69 protein, His-tagged

Cat. No. CD69-2225H Lot. No. (See product label)

SPECIFICATION

Product Overview	Recombinant Human CD69 protein(Q07108)(62-199aa), fused with C-terminal His tag, was expressed in HEK293.
Species	Human
Source	HEK293
ProteinLength	62-199aa
Tag	C-His
Form	Lyophilized from a 0.2 um filtered 20 mM Tris-HCl, 0.5 M NaCl, 6% Trehalose, pH 8.0
Bio-activity	Measured by its binding ability in a functional ELISA. Immobilized Human CD69 at 2 µg/mL can bind Anti-CD69 recombinant antibody, the EC50 is 23.17-26.04 ng/mL.
Molecular Mass	18.7 kDa
Endotoxin	Less than 1.0 EU/ug as determined by LAL method.
Purity	Greater than 95% as determined by SDS-PAGE.
Storage	Store at -20°C/-80°C upon receipt, aliquoting is necessary for mutiple use. Avoid repeated freeze-thaw cycles.

 Tel: 1-631-559-9269 1-516-512-3133

 Email: info@creative-biomart.com  Fax: 1-631-938-8127

 45-1 Ramsey Road, Shirley, NY 11967, USA

Reconstitution	We recommend that this vial be briefly centrifuged prior to opening to bring the contents to the bottom. Please reconstitute protein in deionized sterile water to a concentration of 0.1-1.0 mg/mL. We recommend to add 5-50% of glycerol (final concentration) and aliquot for long-term storage at -20°C/-80°C.
AA Sequence	SVGQYNCPGQYTFSPSDSHVSSCEDWVG YQRKCYFISTVKRSWTS AQNACSE HGATLAVIDSEKDMNFLKRYAGREEHWWGLKKEPGHPWKWSNGKEFNNWFNVTG SDKCVFLKNTEVSSMECEKNLYWICKNPYK

GENE INFORMATION

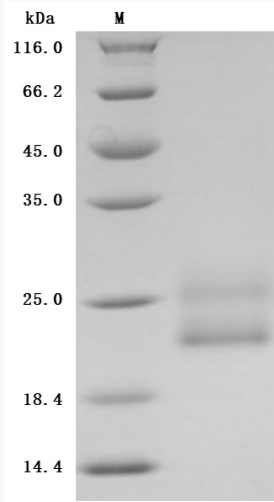
Gene Name	CD69 CD69 molecule [Homo sapiens]
Official Symbol	CD69
Synonyms	CD69; CD69 molecule; CD69 antigen (p60, early T cell activation antigen); early activation antigen CD69; CLEC2C; leukocyte surface antigen Leu-23; early T-cell activation antigen p60; early lymphocyte activation antigen; activation inducer molecule (AIM/CD69); C-type lectin domain family 2, member C; CD69 antigen (p60, early T-cell activation antigen); AIM; EA1; MLR-3; GP32/28; BL-AC/P26;
Gene ID	969
mRNA Refseq	NM_001781
Protein Refseq	NP_001772
MIM	107273
UniProt ID	Q07108

 Tel: 1-631-559-9269 1-516-512-3133

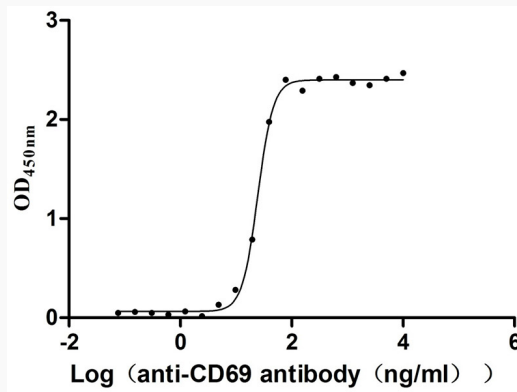
 Email: info@creative-biomart.com  Fax: 1-631-938-8127

 45-1 Ramsey Road, Shirley, NY 11967, USA

SDS-PAGE



Activity



 Tel: 1-631-559-9269 1-516-512-3133

 Email: info@creative-biomart.com  Fax: 1-631-938-8127

 45-1 Ramsey Road, Shirley, NY 11967, USA