

Recombinant Human CD69 protein, His-tagged

Cat. No. CD69-5844H Lot. No. (See product label)

SPECIFICATION

Product Overview	Recombinant Human CD69 protein(Q07108)(64-199aa), fused with N-terminal His tag, was expressed in HEK293.
Species	Human
Source	HEK293
ProteinLength	64-199aa
Tag	N-His
Form	If the delivery form is liquid, the default storage buffer is Tris/PBS-based buffer, 5%-50% glycerol. If the delivery form is lyophilized powder, the buffer before lyophilization is Tris/PBS-based buffer, 6% Trehalose, pH 8.0.
Molecular Mass	18.0 kDa
Purity	Greater than 85% as determined by SDS-PAGE.
Storage	Store at -20°C/-80°C upon receipt, aliquoting is necessary for mutiple use. Avoid repeated freeze-thaw cycles.
Reconstitution	We recommend that this vial be briefly centrifuged prior to opening to bring the contents to the bottom. Please reconstitute protein in deionized sterile water to a concentration of 0.1-1.0 mg/mL. We recommend to add 5-50% of glycerol (final

 Tel: 1-631-559-9269 1-516-512-3133

 Email: info@creative-biomart.com  Fax: 1-631-938-8127

 45-1 Ramsey Road, Shirley, NY 11967, USA

concentration) and aliquot for long-term storage at -20°C/-80°C.

AA Sequence

GQYNCPGQYTFSMPSDSHVSSCEDWVG YQRKCYFISTVKRSWTS AQNACSEHG
 ATLAVIDSEKDMNFLKRYAGREEHWVGLKKEPGHPWKWSNGKEFNWVNTGSD
 KCVFLKNTEVSSMECEKNLYWICKPKPYK

GENE INFORMATION

Gene Name [CD69 CD69 molecule \[Homo sapiens \]](#)

Official Symbol [CD69](#)

Synonyms

CD69; CD69 molecule; CD69 antigen (p60, early T cell activation antigen); early activation antigen CD69; CLEC2C; leukocyte surface antigen Leu-23; early T-cell activation antigen p60; early lymphocyte activation antigen; activation inducer molecule (AIM/CD69); C-type lectin domain family 2, member C; CD69 antigen (p60, early T-cell activation antigen); AIM; EA1; MLR-3; GP32/28; BL-AC/P26;

Gene ID [969](#)

mRNA Refseq [NM_001781](#)

Protein Refseq [NP_001772](#)

MIM [107273](#)

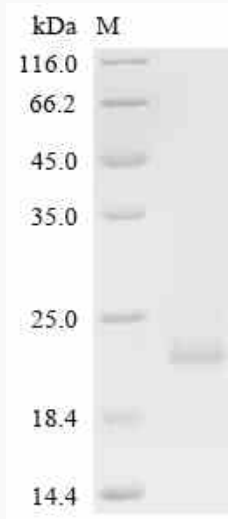
UniProt ID [Q07108](#)

 Tel: 1-631-559-9269 1-516-512-3133

 Email: info@creative-biomart.com  Fax: 1-631-938-8127

 45-1 Ramsey Road, Shirley, NY 11967, USA

SDS-PAGE



 Tel: 1-631-559-9269 1-516-512-3133

 Email: info@creative-biomart.com  Fax: 1-631-938-8127

 45-1 Ramsey Road, Shirley, NY 11967, USA