

## Recombinant Human CD7 protein, His-Avi-tagged

Cat. No. CD7-032H Lot. No. (See product label)

### SPECIFICATION

<b>Product Overview</b>	Recombinant Human CD7 protein(P09564)(Ala26-Pro180), fused with C-terminal His and Avi tag, was expressed in HEK293.
<b>Species</b>	Human
<b>Source</b>	HEK293
<b>ProteinLength</b>	Ala26-Pro180
<b>Tag</b>	C-His-Avi
<b>Form</b>	Lyophilized from 0.22µm filtered solution in PBS (pH 7.4). Normally 5% trehalose is added as protectant before lyophilization.
<b>Bio-activity</b>	Immobilized Human CD7, His Tag at 0.5ug/ml (100ul/Well) on the plate. Dose response curve for Anti-CD7 Antibody, hFc Tag with the EC50 3.2ng/ml determined by ELISA.
<b>Molecular Mass</b>	The protein has a predicted MW of 19.3 kDa. Due to glycosylation, the protein migrates to 34-48 kDa based on Tris-Bis PAGE result.
<b>Endotoxin</b>	Less than 1EU per µg by the LAL method.
<b>Purity</b>	> 95% as determined by Tris-Bis PAGE;> 95% as determined by HPLC

 Tel: 1-631-559-9269 1-516-512-3133

 Email: [info@creative-biomart.com](mailto:info@creative-biomart.com)  Fax: 1-631-938-8127

 45-1 Ramsey Road, Shirley, NY 11967, USA

**Storage** Reconstituted protein stable at -80°C for 12 months, 4°C for 1 week. Use a manual defrost freezer and avoid repeated freeze-thaw cycles.

**Reconstitution** Centrifuge tubes before opening. Reconstituting to a concentration more than 100 µg/ml is recommended. Dissolve the lyophilized protein in distilled water.

## GENE INFORMATION

**Gene Name** [CD7 CD7 molecule \[ Homo sapiens \]](#)

**Official Symbol** [CD7](#)

**Synonyms** CD7; CD7 molecule; CD7 antigen (p41); T-cell antigen CD7; GP40; LEU 9; p41 protein; T cell antigen CD7; T cell leukemia antigen; Tp40; TP41; T-cell leukemia antigen; T-cell surface antigen Leu-9; LEU-9;

**Gene ID** [924](#)

**mRNA Refseq** [NM\\_006137](#)

**Protein Refseq** [NP\\_006128](#)

**MIM** [186820](#)

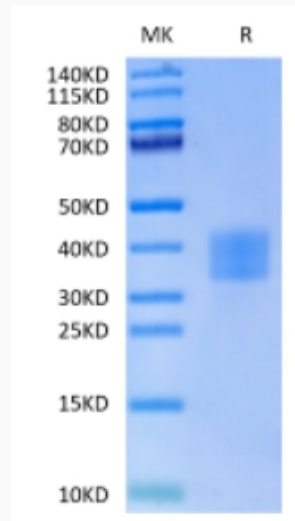
**UniProt ID** [P09564](#)

 Tel: 1-631-559-9269 1-516-512-3133

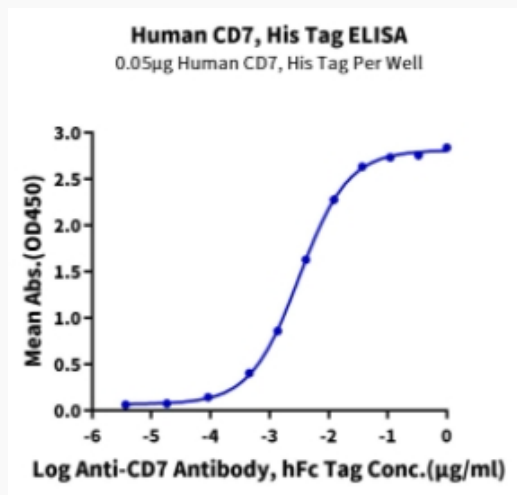
 Email: [info@creative-biomart.com](mailto:info@creative-biomart.com)  Fax: 1-631-938-8127

 45-1 Ramsey Road, Shirley, NY 11967, USA

**Tris-Bis PAGE**



**ELISA Data**



 Tel: 1-631-559-9269 1-516-512-3133

 Email: [info@creative-biomart.com](mailto:info@creative-biomart.com)  Fax: 1-631-938-8127

 45-1 Ramsey Road, Shirley, NY 11967, USA