

## Recombinant Human CD7 Protein, GST-Tagged

Cat. No. CD7-0847H Lot. No. (See product label)

### SPECIFICATION

<b>Product Overview</b>	Human CD7 full-length ORF (AAH09293, 21 a.a. - 240 a.a.) recombinant protein with GST-tag at N-terminal.
<b>Species</b>	Human
<b>Source</b>	Wheat Germ
<b>Description</b>	This gene encodes a transmembrane protein which is a member of the immunoglobulin superfamily. This protein is found on thymocytes and mature T cells. It plays an essential role in T-cell interactions and also in T-cell/B-cell interaction during early lymphoid development. [provided by RefSeq, Jul 2008]
<b>Molecular Mass</b>	49.94 kDa
<b>AA Sequence</b>	PGALAAQEVQQSPHCTTVPVGASVNITCSTSGGLRGIYLRQLGPQPQDIIYYEDGVV PTTDRRFRGRIDFSGSQDNLITMHLQLSDTGTYTCQAITEVNVYGSGLVTVTEE QSQGWHRCSAPPASALPAPPTGSALPDPQTASALPDPPAASALPAALAVISFLLG LGLGVACVLARTQIKKLCWRDKNSAACVVYEDMSHSRCNTLSSPNQYQ
<b>Applications</b>	Enzyme-linked Immunoabsorbent Assay Western Blot (Recombinant protein) Antibody Production Protein Array
<b>Storage</b>	Store at -80 centigrade. Aliquot to avoid repeated freezing and thawing.

 Tel: 1-631-559-9269 1-516-512-3133

 Email: [info@creative-biomart.com](mailto:info@creative-biomart.com)  Fax: 1-631-938-8127

 45-1 Ramsey Road, Shirley, NY 11967, USA

**Storage Buffer** 50 mM Tris-HCl, 10 mM reduced Glutathione, pH=8.0 in the elution buffer.

## GENE INFORMATION

**Gene Name** CD7 CD7 molecule [ Homo sapiens ]

**Official Symbol** CD7

**Synonyms** CD7; CD7 molecule; CD7 antigen (p41); T-cell antigen CD7; GP40; LEU 9; p41 protein; T cell antigen CD7; T cell leukemia antigen; Tp40; TP41; T-cell leukemia antigen; T-cell surface antigen Leu-9; LEU-9;

**Gene ID** 924

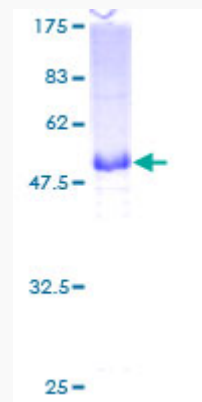
**mRNA Refseq** NM\_006137

**Protein Refseq** NP\_006128

**MIM** 186820

**UniProt ID** P09564

**Quality Control Testing**



 Tel: 1-631-559-9269 1-516-512-3133

 Email: [info@creative-biomart.com](mailto:info@creative-biomart.com)  Fax: 1-631-938-8127

 45-1 Ramsey Road, Shirley, NY 11967, USA



12.5% SDS-PAGE Stained with Coomassie Blue.

 Tel: 1-631-559-9269 1-516-512-3133

 Email: [info@creative-biomart.com](mailto:info@creative-biomart.com)  Fax: 1-631-938-8127

 45-1 Ramsey Road, Shirley, NY 11967, USA