

Recombinant Human CD7 Protein, C-His-tagged

Cat. No. CD7-175H Lot. No. (See product label)

SPECIFICATION

Product Overview	Recombinant Human CD7 Protein with C-His tag was expressed in E. coli.
Species	Human
Source	E.coli
Description	<p>CD7 is a type-I transmembrane glycoprotein belonging to the immunoglobulin superfamily. CD7 is one of the earliest surface markers to be expressed on the surface of developing T cells and its expression is maintained throughout maturation of multiple T cell subsets and NK cells. Engagement of CD7 through binding its ligand, SECTM1, has been shown to promote tyrosine phosphorylation of its cytoplasmic domain, recruitment of PI3K, and delivery of costimulatory signals for T cell activation. While CD7 is expressed on normal T cells, it is also highly expressed in a variety of T cell malignancies, which has poised it as a potential target of immunotherapy.</p>
Molecular Mass	~17 kDa
AA Sequence	AQEVQQSPHCTTVPVGASVNITCSTSGGLRGIYLRQLGPQPQDIIYYEDGVVPTTDR RFRGRIDFSGSQDNLTITMHLQLSDTGTYTCQAITEVNVYGSGLVTLVTEEQSQGW HRCSDAPPRASALPAPPTGSALPDPQTASALPDPPAASALP
Purity	Transferred into competent cells and the supernatant was purified by NI column affinity chromatography and the purity is > 85% (by SDS-PAGE).

 Tel: 1-631-559-9269 1-516-512-3133

 Email: info@creative-biomart.com  Fax: 1-631-938-8127

 45-1 Ramsey Road, Shirley, NY 11967, USA

Notes	For research use only, not for use in diagnostic procedure.
Storage	Store at 4 centigrade short term. Aliquot and store at -20 centigrade long term. Avoid freeze-thaw cycles.
Concentration	≥0.5 mg/mL
Storage Buffer	PBS, 4M Urea, pH7.4

GENE INFORMATION

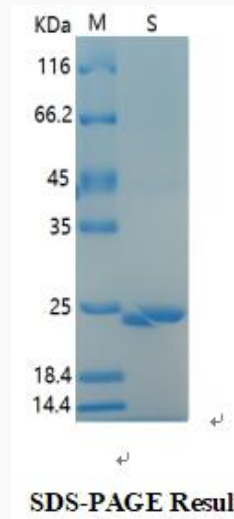
Gene Name	CD7 CD7 molecule [Homo sapiens (human)]
Official Symbol	CD7
Synonyms	CD7; CD7 molecule; CD7 antigen (p41); T-cell antigen CD7; GP40; LEU 9; p41 protein; T cell antigen CD7; T cell leukemia antigen; Tp40; TP41; T-cell leukemia antigen; T-cell surface antigen Leu-9; LEU-9;
Gene ID	924
mRNA Refseq	NM_006137
Protein Refseq	NP_006128
MIM	186820
UniProt ID	P09564

 Tel: 1-631-559-9269 1-516-512-3133

 Email: info@creative-biomart.com  Fax: 1-631-938-8127

 45-1 Ramsey Road, Shirley, NY 11967, USA

SDS-PAGE



 Tel: 1-631-559-9269 1-516-512-3133

 Email: info@creative-biomart.com  Fax: 1-631-938-8127

 45-1 Ramsey Road, Shirley, NY 11967, USA